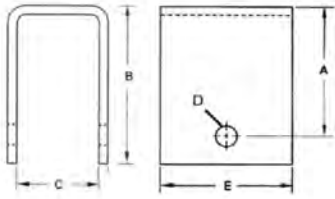


# Axle Components

- Hangers & Kits
- AP Kits
- Equalizers
- Leaf Springs
- U-Bolts
- Tie Plates, Shocks, & Spring Pads
- Spindles & Brake Flanges
- Bolts, Nuts, Bushings & Shackles
- Studs, Wheel Bolts & Nuts
- Hubs, Drums & Disc, Rotors
- Bearings & Races
- Seals
- Dust Caps
- Brake Assembly
- Brake Components

# Axle Components



**A:** Top to Center Hole  
**B:** Top Bottom  
**C:** Inside Width

**D:** Hole Diameter  
**E:** Side Width

## Hangers 1 3/4 in. Wide



F: Mfg.

Item Number	Description	SO	A	B	C	D	E	F
093013	Hanger 1.75in		1in	2-1/2in	1-1/4in	9/16in	3in	Al-Ko
09303001	Hanger Rear	Yes	.71in	1.15in	2-3/16in	.77in	1in	Al-Ko
92805	Hanger		3-1/4in	3-3/4in	1-7/8in	9/16in	3in	Tuff-Tow
92806	Hanger Front		1-3/8in	1-7/8in	1-7/8in	9/16in	3in	Al-Ko
92810	Hanger		5in	5-1/2in	1-3/4in	9/16in	3in	Al-Ko
9283301	Hanger Center		4-1/4in	4-7/8in	1-15/16in	9/16in	3in	Al-Ko
E1	Hanger Rear Eye		.75	1-1/2in	1-3/4in	9/16in	3-3/16in	Al-Ko
E4	Hanger Rear		1-1/8in	2in	1-1/4in	9/16in	1-1/2in	Lippert
H2	Hanger		2in	2-9/16in	1-7/8in	9/16in	3in	Tuff-Tow
LC106181	Hanger		1.44in	3.00 in	1-7/8 in	.57	1.948	Lippert
LC106182	Hanger		2-1/8in	3in	1-7/8in	9/16in	3in	Lippert
LC106185	Hanger Center 4.25in		4-1/4in	4-7/8in	1-15/16in	9/16in	3in	Lippert
LC133206	Hanger Center		3.62in	4.25in	1.78in	9/16in	3in	Lippert
LC207371	Hanger Slipper Spring		1.13in	1.32in	----	----	1.54in	Lippert
RH1	Hanger Center		4-3/4in	5-1/2in	1-15/16in	9/16in	2-1/2in	Phoenix

Axle Components

# Axle Components

## Hangers 2.25 in. Wide



92825



92828



93023



LC106183

Fits 2" Slipper Springs

F: Mfg.

Item Number	Description	SO	A	B	C	D	E	F
92825	Hanger Front		4in	5in	2-1/4in	9/16in	3in	Al-Ko
92828	Hanger Front		4in	5in	2-1/4in	9/16in	3in	Al-Ko
93023	Hanger Rear		5-1/8in	5-7/8in	2-1/4in	3/8in	3in	Al-Ko
LC106183	Hanger Center		3.25in	3.948in	1-7/8in	9/16in	3in	Lippert

## Hangers 3 in. Wide



92910



92917



LC127782



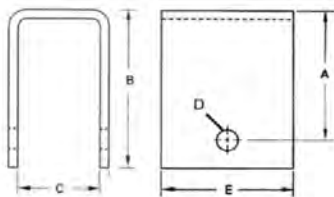
LC127783



LC127784

F: Mfg.

Item Number	Description	SO	A	B	C	D	E	F
92910	Hanger Center		4-1/4in	5-1/4in	3in	7/8in	3in	Al-Ko
92917	Hanger Center		4-1/4in	5-1/4in	3in	7/8in	3in	Al-Ko
LC127782	Hanger Center		3.38	4.56	3.00	7/8in.	3.00	Lippert
LC127783	Hanger Rear Slip for 2in Spring		5.06	6.00	2.25	.38	3.00	Lippert
LC127784	Hanger Front		3.75in	4.56in	2.25in	.57in	3.00in	Lippert



**A:** Top to Center Hole  
**B:** Top Bottom  
**C:** Inside Width

**D:** Hole Diameter  
**E:** Side Width

Axle Components

# Axle Components

## Hanger Kits



See Following Pages  
For Parts Breakdown

A: Spring Width    B: Axle Capacity    C: Mfg.

Item Number	Description	SO	A	B	C
60190102	Single Hanger Kit		1.75in	2K-7K	Al-Ko
60190605	Single Slipper Hanger Kit		2in	3.5K-8K	Al-Ko
60190606	Tandem Hanger Kit		2in	7K-8K	Al-Ko
60190607	Triple Slipper Hanger Kit		2in	7K-8K	Al-Ko
60190708	Single Hanger Kit	Yes	----	10-12K	Al-Ko
6019071038	Slipper Hanger Kit w/2 Short Equalizers		2.5in	10K-16K	Al-Ko
6019071042	Slipper Hanger Kit w/2 Medium Equalizers		2.5in	10K-16K	Al-Ko
6019071048	Slipper Hanger Kit w/2 long Equalizers		2.5in	10K-16K	Al-Ko
601909	Single Slipper Hanger Kit		2in	3.5K-6K	Al-Ko
60191201	Tandem Hanger Kit		1.75in	3.5K-6K	Al-Ko
601928	Tandem Slipper Hanger Kit		2in	3.5K-6K	Al-Ko
60196625	Tandem Slipper Hanger Kit		2in	7K-8K	Al-Ko
601984	Triple Slipper Hanger Kit		2in	3.5K-6K	Al-Ko
9939	Triple Hanger Kit 10K	Yes	----	10K	Al-Ko
H1001	Single Hanger Kit 1.75in Eye To Eye		1.75in	3.5K-7K	Tuff-Tow
H1002	Tandem Hanger Kit Straight Equalizer 5.5in		1.75in	3.5K-7K	Tuff-Tow
H1002D	Tandem Hanger Kit Curved Equalizer 5.75in		1.75in	3.5K-7K	Tuff-Tow
H1003	Triple Hanger Kit Straight Equalizer 5.5in		1.75in	3.5K-7K	Tuff-Tow
H1125	Single Hanger Kit		1.75in	2k-7k	Tuff-Tow
H1125SL	Single Slipper Hanger Kit		1.75in	2K	Tuff-Tow
H1375SL	Single Slipper Hanger Kit		2in	3.5-8K	Tuff-Tow
H2125	Tandem Hanger Kit 33in		1.75in	3.5-7K	Tuff-Tow
H2257	Tandem Hanger Kit 35in		1.75in	3.5-7K	Tuff-Tow
H237511SL	Tandem Slipper Hanger Kit 33.5in		2in	3.5-8K	Tuff-Tow
H237513SL	Tandem Slipper Hanger Kit 35in		2in	3.5-8K	Tuff-Tow
H3001	Triple Hanger Kit Curved Equalizer 7.75in		1.75in	3.5k-7k	Tuff-Tow
H3002	Triple Hanger Kit Equalizer 7.75in		1.75in	3.5-7K	Tuff-Tow
H3003SL	Triple Hanger Kit 33.5/2in Slip		2in	3.5-8K	Tuff-Tow
H3004SL	Triple Hanger Kit 36/2in Slip		2in	3.5-8K	Tuff-Tow
HAP-101-00	Single Hanger Kit	Yes	----	20K	Dexter
HAP-103-00	Single Axle Hanger Kit	Yes	----	10-15K	Dexter
HAP-105-00	Single Hanger Kit	Yes	2in	8K	Dexter

# Axle Components

## Hanger Kits

Item Number	Description	SO	A	B	C
<b>HAP-158-00</b>	Single Hanger Kit-Use on 2-1/2in Spring		3/4in	10K	Dexter
<b>HAP-201-00</b>	Multi Hanger Kit	Yes	----	20K	Dexter
<b>HAP-203-01</b>	Multi Hanger Kit	Yes	----	10-15K	Dexter
<b>HAP-203-02</b>	Multi Hanger Kit	Yes	----	10-15K	Dexter
<b>HAP-203-03</b>	Multi Hanger Kit	Yes	----	10-15K	Dexter
<b>HAP-205-01</b>	Multi Hanger Kit	Yes	2in	8K	Dexter
<b>HAP-258-01</b>	Multi Hanger Kit	Yes	2.5in	10K	Dexter
<b>HAP-258-02</b>	Multi Hanger Kit 2.5 In. Wide 42.25 Space		3/4in	10K	Dexter
<b>HAP-258-03</b>	Multi Hanger Kit	Yes	----	10KGD	Dexter
<b>HGR-238</b>	Slipper Hanger Kit	Yes	4.5in	8K	Dexter
<b>HSL2001</b>	Single Slip Hanger Kit		1-3/4in	2K	Tuff-Tow
<b>K71-358</b>	Single Hanger Kit-No Hangers		1.75in	3.5K-7K	Dexter
<b>K71-359</b>	Tandem Hanger Kit-No Hangers		1.75in	3.5K-7K	Dexter
<b>K71-360-00</b>	Triple Hanger Kit HD		1.75in	3.5K-7K	Dexter
<b>K71-366-00</b>	Tandem Slipper Spring Kit	Yes	1.75in	3.5K-7K	Dexter
<b>K71-448-00</b>	Tandem Suspension Kit HD		1.75in	3.5K-7K	Dexter
<b>K71-449-00</b>	Tandem Hanger Kit 35in Axle space 7.75in Eq-No Hangers		1.75in	3.5K-7K	Dexter
<b>K71-453-00</b>	Triple Hanger Kit		1.75in	3.5K-7K	Dexter
<b>LC137391</b>	Triple Slipper Hanger Kit H3002		1.75in	3.5K-7K	Lippert
<b>LC184154</b>	Triple Axle Hanger Kit		----	10K	Lippert

# Axle Components

## Hanger Kits Hanger Kit Breakdown



H1001		
Items	Qty	Description
E1	2	Hanger 1.75in Rear Eye
H2	2	Hanger 1.75in x 2in
B2	6	Bolt 9/16in x 3in Shackle
N3	6	Nut 9/16in Locking
LC105882	4	Shackle 2.25in



H1003		
Items	Qty	Description
H2	4	Hanger 1.75in x 2in
RH1	4	Hanger 1.75in Center
R2	4	Equalizer Straight 5.5in
LC105882	16	Shackle 2.25in
B2	24	Bolt 9/16in x 3in Shackle
N3	24	Nut 9/16in Locking



H1002		
Items	Qty	Description
LC106182	4	Hanger 1.75in x 2.125in
LC106185	2	Hanger 4.25in Center
R2	2	Equalizer Straight 5.5in
LC105882	8	Shackle 2.25in
LC122102	14	Bolt Shackle 9/16in x 2-7/8in Step
LC122103	14	Nut 7/16in Flange



H1125		
Items	Qty	Description
LC105882	4	Shackle 2.25in
LC122102	6	Bolt Shackle 9/16in x 2-7/8in Step
LC122103	6	Nut 7/16in Flange
LC113498	2	Hanger .88in Single Rear
LC106181	2	Hanger 1.25in



H1002D		
Items	Qty	Description
LC106183	4	Hanger 3.25in Center
LC133206	2	Hanger 3.63in Center
LC126460	2	Equalizer Curved 5-3/4in
LC105882	8	Shackle 2.25in
LC122102	14	Bolt Shackle 9/16in x 2-7/8in Step
LC122103	14	Nut 7/16in Flange



H1125SL		
Items	Qty	Description
LC207371	2	Hanger Slipper Spring 1.75in
LC106181	2	Hanger 1.25in
LC122102	2	Bolt Shackle 9/16in x 2-7/8in Step
LC122103	2	Nut 7/16in Flange

Axle Components

# Axle Components

## Hanger Kits Hanger Kit Breakdown



H1375SL		
Items	Qty	Description
LC127784	2	Hanger Front 2.25in
LC127783	2	Hanger Rear Slipper 2.25in
LC126782	2	Bolt 9/16-18x3.5 GR5 Blk Phos
LC125801	2	Nut 9/16-18 Prevailing T or Z
LC127799	2	Nut 5/16-18 Crush Nut Zinc
LC127828	2	Bolt 5/16-18x3 1/4 GR5 Zinc



H237511SL		
Items	Qty	Description
LC127784	2	Hanger Front 2.25in
LC127782	2	Hanger Center 3in
LC127783	2	Hanger Rear Slipper 2.25in
LC127771	2	Equalizer for 2in Slipper
LC126782	4	Bolt 9/16-18x3.5 GR5 Blk Phos
LC125801	4	Nut 9/16-18 Prevailing T or Z
LC127828	4	Bolt 5/16-18x3 1/4 GR5 Zinc
LC127799	4	Nut 5/16-18 Crush Nut Zinc
9070701	2	Bolt 7/8in x 4.75in Carriage
90612L	2	Nut 7/8in



H2125		
Items	Qty	Description
LC106181	4	Hanger 1.25in
LC106182	2	Hanger 1.75in w x 2.125in
LC126460	2	Equalizer Curved 5-3/4in
LC105882	8	Shackle 2.25in
LC122102	14	Bolt Shackle 9/16in x 2-7/8in Step
LC122103	14	Nut 7/16in Flange



H3001		
Items	Qty	Description
LC106183	8	Hanger 3.25 Center
LC122106	4	Equalizer Curved 7-3/4in
LC105882	16	Shackle 2.25in
LC122102	24	Bolt Shackle 9/16in x 2-7/8in Step
LC122103	24	Nut 7/16in Flange



H2257		
Items	Qty	Description
LC106182	4	Hanger 1.75in w x 2.125in
LC106183	2	Hanger 3.25in Center
LC122106	2	Equalizer Curved 7-3/4in
LC105882	8	Shackle 2.25in
LC122102	14	Bolt Shackle 9/16in x 2-7/8in Step
LC122103	14	Nut 7/16in Flange



H3002		
Items	Qty	Description
LC106181	4	Hanger 1.25in
LC106182	4	Hanger 1.75in w x 2.125in
LC122106	4	Equalizer Curved 7-3/4in
LC105882	16	Shackle 2.25in
LC122102	24	Bolt Shackle 9/16in x 2-7/8in Step
LC122103	24	Nut 7/16in Flange

## Hanger Kit Breakdown

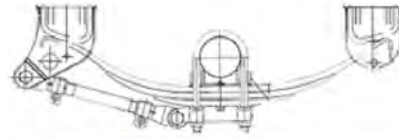
Axle Components

# Axle Components

## Hanger Kits Hanger Kit Breakdown



H3003SL		
Items	Qty	Description
LC127784	2	Hanger Front 2.25in
LC127782	4	Hanger Center 3in
LC127783	2	Hanger Rear Slipper 2.25in
LC127771	4	Equalizer for 2in Slipper
LC126782	6	Bolt 9/16-18x3.5 GR5 Blk Phos
LC125801	6	Nut 9/16-18 Prevailing T or Z
LC127828	6	Bolt 5/16-18x3 1/4 GR5 Zinc
LC127799	6	Nut 5/16-18 Crush Nut Zinc
9070701	4	Bolt 7/8in x 4.75in Carriage
90612L	4	Nut 7/8in



HAP-101-00		
Items	Qty	Description
	2	Front Hanger
	2	Rear Hanger w/Bolt Spacer & Nut
	2	Bottom Plate
	1	Torque Arm-Adjustable
	1	Torque Arm-Non-Adjustable
	4	Torque Arm Bolt
	4	Locknut Flanged
	8	Washer 7/8in Flat
	8	Hex Nut 7/8in
	4	U-Bolt 11-3/4in Length
	2	Spring 3-Leaf Standard
	2	Spring Seat 3/4in High
	2	Galvanized Liner



H3004SL		
Items	Qty	Description
LC127784	2	Hanger Front 2.25in
LC127782	4	Hanger Center 3in
LC127783	2	Hanger Rear Slipper 2.25in
EQ-1344	4	Equalizer for 2in Slipper
LC126782	6	Bolt 9/16-18x3.5 GR5 Blk Phos
LC125801	6	Nut 9/16-18 Prevailing T or Z
LC127828	6	Bolt 5/16-18x3 1/4 GR5 Zinc
LC127799	6	Nut 5/16-18 Crush Nut Zinc
9070701	4	Bolt 7/8in x 4.75in Carriage
90612L	4	Nut 7/8in



HAP-103-00		
Items	Qty	Description
028-067-04	2	Front Hanger
030-066-01	2	Rear Hanger
007-169-00	2	Spring Eye Bolt
007-095-00	2	Keeper Bolt
006-046-00	2	Locknut
006-112-00	2	Locknut
059-203-00	1	Instruction Sheet



HSL2001		
Items	Qty	Description
LC207371	2	Hanger Slipper Spring 1.75in
H2	2	Hanger 1.75in x 2in
LC122102	2	Bolt Shackle 9/16in x 2-7/8in Step
LC122103	2	Nut 7/16in Flange



HAP-158-00		
Items	Qty	Description
028-074-02	2	Hanger
030-073-01	2	Rear Hanger
007-264-00	2	Spring Eye Bolt
006-113-00	2	Locknut
059-203-00	1	Instruction Sheet

Axle Components



# Axle Components

## Hanger Kits Hanger Kit Breakdown



HAP-201-00		
Items	Qty	Description
	2	Hanger & Equalizer Assembly
	2	Hanger & Equalizer Assembly
	2	Equalizer Assembly w/rubber bushing
	2	Hex Cap Screw
	4	Washer
	2	Hex Locknut
	4	Sleeve Spacer
	4	Hex Nut 5/8in
	4	Hex Bolt 5/8in
	2	Bottom Plate
	1	Torque Arm-Adjustable
	1	Torque Arm-Non-Adjustable
	4	Torque Arm Bolt
	4	Locknut Flanged
	8	Washer 7/8in Flat
	8	Hex Nut 7/8in
	4	U-Bolt 11-3/4in Length
	2	Spring 3-Leaf Standard
	2	Spring Seat 3/4in High
	2	Galvanized Liner

K71-358-00		
Items	Qty	Description
006-092-01	6	Lock Nut
007-187-00	2	Step Bolt Wet
014-077-00	4	Bronze Bushing
018-022-01	2	Shackle Link
018-027-01	2	Shackle Link Assembly
059-547-00	1	Instruction Sheet



HAP-203-02		
Items	Qty	Description
029-037-04	2	Center Hanger
013-108-03	1	LH Equalizer
013-108-04	1	RH Equalizer
007-169-00	2	Spring Eye Bolt
007-095-00	2	Keeper Bolt
007-170-00	2	Equalizer Bolt
006-046-00	2	Locknut
006-072-00	2	Locknut
006-112-00	2	Locknut
059-203-00	1	Instruction Sheet



HAP-203-01		
Items	Qty	Description
029-037-04	2	Center Hanger
013-107-07	1	LH Equalizer
013-107-08	1	RH Equalizer
007-169-00	2	Spring Eye Bolt
007-095-00	2	Keeper Bolt
007-170-00	2	Equalizer Bolt
006-046-00	2	Locknut
006-072-00	2	Locknut
006-112-00	2	Locknut
059-203-00	1	Instruction Sheet

HAP-203-03		
Items	Qty	Description
029-037-04	2	Center Hanger
013-109-03	1	LH Equalizer
013-109-04	1	RH Equalizer
007-169-00	2	Spring Eye Bolt
007-095-00	2	Keeper Bolt
007-170-00	2	Equalizer Bolt
116-046-00	2	Locknut
006-072-00	2	Locknut
006-112-00	2	Locknut
059-203-00	1	Instruction Sheet

## Hanger Kit Breakdown

# Axle Components

## Hanger Kits Hanger Kit Breakdown



HAP-258-02		
Items	Qty	Description
006-112-00	2	Locknut
006-113-00	2	Locknut
007-264-00	2	Spring Eye Bolt
007-169-00	2	Equalizer Bolt
013-140-03	2	Equalizer
029-042-02	2	Center Hanger
059-203-00	1	Instruction Sheet



K71-360-00		
Items	Qty	Description
006-092-01	22	Lock Nut
007-126-00	4	Bolt
007-187-00	6	Step Bolt Wet
013-104-04	2	Equalizer-Rear
013-105-04	2	Equalizer-Front
014-077-00	12	Bronze Bushing
018-024-01	6	Shackle Link
018-026-00	6	Shackle Link Assembly
059-547-00	1	Instruction Sheet



K71-449-00		
Items	Qty	Description
006-092-01	14	Lock Nut
007-126-00	2	Bolt
007-187-00	4	Step Bolt Wet
013-122-04	2	Equalizer 2.88in x 7.67in centers
014-077-00	8	Bronze Bushing
018-024-01	4	Shackle Link
018-026-00	4	Shackle Link Assembly
059-547-00	1	Instruction Sheet



K71-448-00		
Items	Qty	Description
006-092-01	14	Lock Nut
007-126-00	2	Bolt
007-187-00	4	Step Bolt Wet
013-010-04	2	Equalizer 4in x 6in centers
014-077-00	8	Bronze Bushing
018-024-01	4	Shackle Link
018-026-00	4	Shackle Link Assembly
059-547-00	1	Instruction Sheet



K71-359-00		
Items	Qty	Description
006-092-01	14	Lock Nut
007-126-00	2	Bolt
007-187-00	4	Step Bolt Wet
014-077-00	8	Bronze Bushing
013-104-04	2	Equalizer 2in x 5-3/4in centers
018-024-01	4	Shackle Link
018-026-00	4	Shackle Link Assembly
059-547-00	1	Instruction Sheet



K71-654-00		
Items	Qty	Description
006-007-01	2	Hex Lock Nut
007-003-01	2	Shackle Bolt
013-143-03	2	Equalizer Assembly
059-863-00	1	Instruction Sheet

Axle Components

# Axle Components

## Hanger Kits Hanger Kit Breakdown



K71-453-00		
Items	Qty	Description
006-092-01	22	Lock Nut
007-126-00	4	Bolt
007-187-00	6	Step Bolt Wet
013-122-04	2	Equalizer-Rear Bronzed Bushed
013-126-04	2	Equalizer-Front Bronzed Bushed
014-077-00	12	Bronze Bushing
018-024-01	6	Shackle Link
018-026-00	6	Shackle Link Assembly
059-547-00	1	Instruction Sheet



601909		
Items	Qty	Description
92825	2	Hanger 2.25in Front
93023	2	Hanger Rear Slip 2.25in
90725	2	Bolt 3/8in x 3.5in Slipper
90629	2	Nut 3/8in
90744	2	Bolt 9/16in x 3.50in Shackle
N3	2	Nut 9/16in Locking



K71-652-00		
Items	Qty	Description
006-007-01	2	Hex Lock Nut
006-092-01	12	Flange Lock Nut
007-003-01	2	Shackle Bolt
007-187-00	4	Step Bolt Wet
013-143-03	2	Equalizer Assembly
014-077-00	8	Bronze Bushing
018-024-01	4	Shackle Link
018-026-00	4	Shackle Link Assembly
059-867-00	1	Instruction Sheet

K71-655-00		
Items	Qty	Description
006-007-01	2	Hex Lock Nut
007-003-01	2	Shackle Bolt
013-144-03	2	Equalizer Assembly
059-863-00	1	Instruction Sheet



K71-653-00		
Items	Qty	Description
006-007-01	2	Hex Lock Nut
006-092-01	12	Flange Lock Nut
007-003-01	2	Shackle Bolt
007-187-00	4	Step Bolt Wet
013-144-03	2	Equalizer Assembly
014-077-00	8	Bronze Bushing
018-024-01	4	Shackle Link
018-026-00	4	Shackle Link Assembly
059-867-00	1	Instruction Sheet

60190102		
Items	Qty	Description
H2	2	Hanger 1.75in x 2in
93013	2	Hanger 1.75in x 2in
91802	4	Shackle 2.50in
B2	6	Bolt 9/16in x 3in Shackle
N3	6	Nut 9/16in Locking



60190605		
Items	Qty	Description
92828	2	Hanger 2.25in Front
93023	2	Hanger Rear Slip 2.25in
90744	2	Bolt 9/16in x 3.50in Shackle
N3	2	Nut 9/16in Locking
90725	2	Bolt 3/8in x 3.5in Slipper
90629	2	Nut 3/8in

## Hanger Kit Breakdown

# Axle Components

## Hanger Kits Hanger Kit Breakdown



60190606		
Items	Qty	Description
92828	2	Hanger 2.25in Front
92917	2	Hanger 3in Center
93023	2	Hanger Rear Slip 2.25in
91354	2	Equalizer Slipper BH 2x12 Alko
9070701	2	Bolt 7/8in x 4.75in Carriage
90612L	2	Nut 7/8in
90744	4	Bolt 9/16in x 3.50in Shackle
N3	4	Nut 9/16in Locking
90725	4	Bolt 3/8in x 3.5in Slipper
90629	4	Nut 3/8in
LC122075	2	Pin Cotter 1-3/4in x 1/8in

60191201		
Items	Qty	Description
91356	2	Curved Equalizer
B2	14	Bolt 9/16in x 3in Shackle
N3	14	Nut 9/16in Locking
92805	6	Hanger 1.75in
91802	8	Shackle 2.50in



601928		
Items	Qty	Description
091303	2	Equalizer Slipper 6-8k Alko
90612L	2	Nut 7/8in
90629	4	Nut 3/8in
N3	4	Nut 9/16in Locking
90744	4	Bolt 9/16in x 3.50 Shackle
90725	4	Bolt 3/8in x 3.5in Slipper
92825	2	Hanger 2.25in Front
92910	2	Hanger 3in Center
93023	2	Hanger Rear Slip 2.25in
LC122075	2	Pin Cotter 1-3/4in x 1/8in
9070701	2	Bolt 7/8in x 4.75in Carriage

60196625		
Items	Qty	Description
90612L	2	Nut 7/8in
90629	4	Nut 3/8in
N3	4	Nut 9/16in Locking
9070701	2	Bolt 7/8in x 4.75in Carriage
90725	4	Bolt 3/8in x 3.5in Slipper
90744	4	Bolt 9/16in x 3.50in Shackle
091303	2	Equalizer Slipper 6-8k Alko
LC122075	2	Pin Cotter 1-3/4in x 1/8in
92828	2	Hanger 2.25in Front
92917	2	Hanger 3in Center
93023	2	Hanger Rear Slip 2.25in

Axle Components

# Axle Components

## AP Kits



GFAP6001



QFAP8001



QFAP6002



QFAP8002



K1530184



K1530185

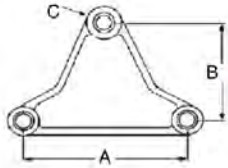


K1530186

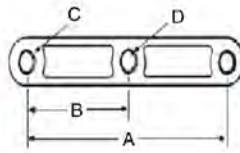
A: Mfg.

Item Number	Description	SO	A
K1530184	AP Kit Mounting Brackets 3.5K		AI-Ko
K1530185	AP Kit Mounting Brackets 5.2K/6K		AI-Ko
K1530186	AP Kit Mounting Brackets 7K		AI-Ko
QFAP6001	AP Kit Q-Flex (1 Per Axle) 3.5K/6K		AI-Ko
QFAP6002	AP Kit Bolts Only (4 Bolts)		AI-Ko
QFAP8001	AP Kit Q-Flex 7K		AI-Ko
QFAP8002	AP Kit Bolts Only (4 Bolts)		AI-Ko

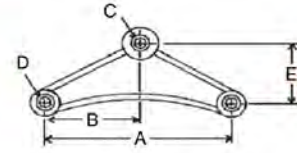
# Axle Components



**Triangle**



**Straight**



**Curved**

## Equalizers Straight



09138603  
A2251B



E10-18



R2



R4

See Chart Above For Size Reference

Item Number	Description	Extra Info	A	B	C	D
09138603	Straight Equalizer 1-3/4in	Tuff-Tow	8in	4in	9/16in	3/4in
A2251B	Straight Equalizer 1-3/4in	Tuff-Tow	8in	4in	9/16in	9/16in
E10-18	Loader Equalizer No Bushing	Tuff-Tow	8-3/4in	3-1/2in	3-1/2in	9/16in
R2	Straight Equalizer 1-3/4in	Tuff-Tow	5-1/2in	2-3/4in	9/16in	9/16in
R4	Straight Equalizer 1-3/4in	Tuff-Tow	6-1/2in	3-1/4in	9/16in	9/16in

## Equalizers Curved



91356



9138604



LC122106



LC126460

See Chart Above For Size Reference

Item Number	Alias number	Description	Extra Info	A	B	C	D	E
91356		Curved Equalizer 1-3/4in	Al-Ko	6-1/8in	3-1/16in	9/16in	9/16in	2-1/2
9138604		Curved Equalizer 1-3/4in	Tuff-Tow	6-1/4in	3-1/8in	3/4in	9/16in	2in
LC122106	91301	Curved Equalizer 1-3/4in	Lippert	7-3/4in	3-7/8in	9/16in	9/16in	2-7/8in
LC126460	13-104	Curved Equalizer 1-3/4in	Lippert	5-3/4in	2-7/8in	9/16in	9/16in	2in

## Equalizers Triangle



013-010-04



LC126741



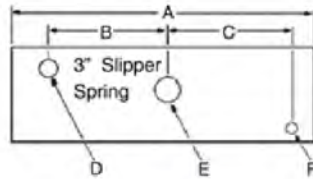
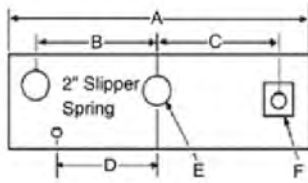
LC126277

**A:** Length **B:** Height **C:** Hole Dia. **D:** Hole Dia.

Item Number	Description	Extra Info	A	B	C	D
013-010-04	Equalizer w/Zirk 1-3/4in	Lippert	6in	4in	9/16in	9/16in
LC126277	Triple Triangle Equalizer 1-3/4in	Lippert	7in	1.15in	9/16in	9/16in
LC126741	Triangle Equalizer 1-3/4in	Lippert	6in	4in	9/16in	9/16in

# Axle Components

## Equalizers Slipper Dexter



013-080-01  
013-081-01

013-044-01



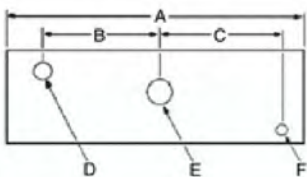
013-117-03

D013-004

**A:** Length **B:** Rear to Center **C:** Front to Center **D:** Rear Hole Dia. **E:** Center Hole **F:** Front Hole **G:** ID

Item Number	Description	SO	A	B	C	D	E	F	G
013-044-01	Slipper Equalizer 36in 7K		13.13in	5.56in	5.94in	9/16in	7/8in	.40in	2.12in
013-080-01	Equalizer	Yes	14in	5in	5.5in	3/4in	1in	N/A	2.5in
013-081-01	Equalizer		14in	5in	5.5in	3/4in	1in	N/A	2.5in
013-107-07	Equalizer	Yes	----	----	----	----	----	----	----
013-108-03	Equalizer 3.00 42.25 Spacing	Yes	18.42in	7.12in	7.68in	1in	1-1/8in	.52in	3.17in
013-109-03	Equalizer 3.00 48.50 Spacing	Yes	24.68in	10.25in	10.50in	1in	1-1/8in	.52in	3.17in
013-117-03	Slipper Equalizer		13.12in	5.56in	5.94in	5/8in	1in	.38in	2.28in
013-118-03	Equalizer 2.00 SS 42.25	Yes	17.42in	7.69in	7.63in	5/8in	1in	5/8in	2.31in
013-119-03	Slipper Equalizer 2in	Yes	23.67in	10.82in	10.75in	5/8in	1in	.38in	2.25in
013-82-01	Slipper Equalizer LH	Yes	18.44in	----	7.12in	3/4in	1in	----	2.60in
013-83-01	Slipper Equalizer RH	Yes	18.44in	----	7.12in	3/4in	1in	----	2.60in
D013-004	Slipper Equalizer		11in	5.50in	5.0in	9/16in	7/8in	3/8in	2.25in

## Equalizers Slipper 2in AIKo



091303



EQ-1344



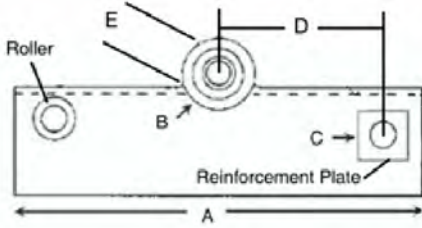
EQ-1304

**A:** Length **B:** Rear to Center **C:** Front to Center **D:** Rear Hole Dia. **E:** Center Hole **F:** Front Hole **G:** ID

Item Number	Description	SO	A	B	C	D	E	F	G
091303	Slipper Equalizer 6-8k		12in	4-3/4in	4-7/8in	9/16in	7/8in	3/8in	2-3/16in
091383	Equalizer 11-1/2 in. SL	Yes	12in	4-3/4in	4-1/2in	9/16in	7/8in	9/16in	2-3/16in
91354	Slipper Equalizer BH 2x12		14in	5-3/4in	6in	9/16in	7/8in	3/8in	2-3/16in
EQ-1304	Slipper Equalizer 2in		11in	4-5/8in	5in	9/16in	7/8in	3/8in	2-1/8in
EQ-1344	Slipper Equalizer 2in		13-1/8in	5-1/2in	6in	9/16in	7/8in	3/8in	2-1/8in

# Axle Components

## Equalizers Slipper 2.5in AIKo



09138706  
09138707



09138708  
09138709



09138710  
09138711

**A:** Length **B:** Center Bolt **C:** Spring Eye Bolt **D:** B Hole to C Hole **E:** ID

Item Number	Description	A	B	C	D	E
09138706	Slipper Equalizer LH 9-16K	11-1/2in	1in	3/4in	4-1/2in	2-3/4in
09138707	Slipper Equalizer RH 9-16K	11-1/2in	1in	3/4in	4-1/2in	2-3/4in
09138708	Slipper Equalizer LH 9-16K	15-3/4in	1in	3/4in	6-3/4in	2-3/4in
09138709	Slipper Equalizer RH 9-16K	15-3/4in	1in	3/4in	6-3/4in	2-3/4in
09138710	Slipper Equalizer LH 9-16K	21-3/4in	1in	3/4in	9-3/4in	2-3/4in
09138711	Slipper Equalizer RH 9-16K	21-3/4in	1in	3/4in	9-3/4in	2-3/4in

## Equalizers Ez Flex & Equaflex



K71-652-00  
K71-653-00



K71-658-00



K71-656-00



K71-654-00  
K71-655-00

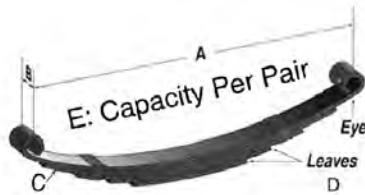
**A:** Length **B:** End to Center **C:** Center Bolt Dia. **D:** End Bolt Dia. **E:** Height **F:** Width **G:** MFG

Item Number	Description	SO	A	B	C	D	E	F	G
K71-652-00	EZ Flex Equalizer 33in Kit		5.70	2.85	9/16	9/16	2.03	1-3/4	Dexter
K71-653-00	EZ Flex Equalizer 35in Kit		7.75	3.875	9/16	9/16	2.875	1-3/4	Dexter
K71-654-00	EZ Flex Equalizer 33in Pair		5.70	2.85	9/16	9/16	2.03	1-3/4	Dexter
K71-655-00	EZ Flex Equalizer 35in Pair		7.70	3.875	9/16	9/16	2.875	1-3/4	Dexter
K71-656-00	EZ Flex Triple 33in. Space		----	----	----	----	----	----	Dexter
K71-657-00	EZ Flex Tri Equalizer 35in		5.7/6.73	2.85/3.36	9/16	9/16	2.03	1-3/4	Dexter
K71-658-00	EZ Flex HD Tri Equalizer Kit		5.7/6.73	2.85/3.36	9/16	9/16	2.03	1-3/4	Dexter
K71-659-00	EZ Flex HD Tri Equalizer Kit 35in Yes		5.7/6.73	2.85/3.36	9/16	9/16	2.03	1-3/4	Dexter



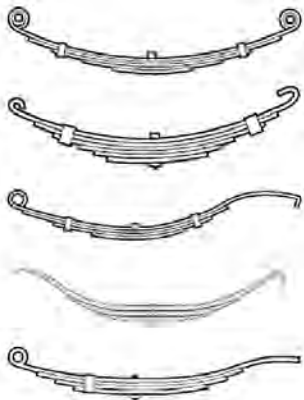
# Axle Components

## Springs, Eye Springs



**A:** Length **B:** Width **C:** Leaf Thickness **D:** Leaf Qty. **E:** Capacity

Item Number	Alias number	Description	Extra Info	SO	A	B	C	D	E
072-013-00		Double-Eye Spring	Dexter	Yes	20.50in	1.75in	----	4	2.8K
072-024-00		Spring	Dexter	Yes	25.25in	1.75in	.388in	3	4K
072-025-00		Eye Spring	Dexter		25.25in	1.75in	.388	4	5.2K
072-027-00		Spring	Dexter	Yes	24.88in	1.75in	.333in	6	7K
072-044-01		Spring Slipper 30s	Dexter	Yes	30.5in	3in	----	6	6K
072-073-00		Double-Eye Spring	Dexter	Yes	25.375in	1.75in	----	5	6K
93102		Eye Spring	Tuff-Tow		25.25in	1.75in	.361in	3	3.5K
93103		Eye Spring	Tuff-Tow		25.25in	1.75in	.365in	4	4.4K
93160		Eye Spring	Tuff-Tow		25.25in	1.75in	.365in	6	6.6K
93162		Eye Spring	Tuff-Tow		20.25in	1.75in	.245in	4	2K
93163		Eye Spring	Tuff-Tow		25.25in	1.75in	.365in	5	6K
93180		Eye Spring	Tuff-Tow		23.25in	1.75in	.362in	3	3.5K
93183		Eye Spring	Tuff-Tow		23.25in	1.75in	.375in	4	5.8K
AWS2		Eye Spring	Tuff-Tow		26in	1.75in	.365in	2	2K
AWS3		Eye Spring	Tuff-Tow		26in	1.75in	.365in	3	3K
AWS4		Eye Spring	Tuff-Tow		26in	1.75in	.365in	4	4K
AWS5		Eye Spring	Tuff-Tow		26in	1.75in	.365in	5	5K
AWS6		Eye Spring	Tuff-Tow		26in	1.75in	.365in	6	6K
AWS7		Eye Spring	Tuff-Tow		26in	1.75in	.365in	7	7K
AWS8		Eye Spring	Tuff-Tow		26in	1.75in	.390in	8	8K
DE-7218		Spring	Tuff-Tow	Yes	23.13in	1.75in	----	4	2K
LC122111	72-26	Eye Spring	Lippert		25.25	1.75	.412in	4	6K
MR3		Eye Spring	Tuff-Tow		26in	1.75in	.5in	3	5.2K
MR4		Eye Spring	Tuff-Tow		26in	1.75in	.5in	4	6K
SCB6		Bolt Leaf Spring Cut to Length	Tuff-Tow		6in	3/8in	----	----	----
SW4B		Eye Spring	Lippert		25.25in	1.75in	.33in	4	3.5K



### Double Eye Springs

1-3/4" Wide Leaf Springs constructed with H.D. spring steel  
Measured Length = Center of Bushing to Center of Bushing in a straight line, no load on spring

### C-Hook Style Slipper

1-3/4" Wide Leaf Springs constructed with heavy duty spring steel Measured Length = Center of Bushing to Center of Bushing in a straight line, no load on spring

### Hook End Slipper Springs

2" Wide Leaf Springs constructed with H.D. spring steel  
Measured Length = Center of Bushing to End of Spring in a straight line, no load on spring

### Semi-Trailer Springs

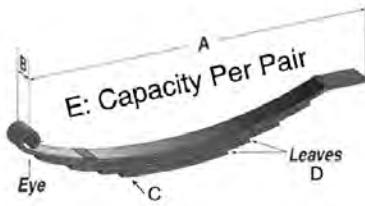
Super Heavy Duty Leaf Springs constructed with heavy duty spring steel

### Flat End Slipper Springs

1-3/4" & 2 1/2" Wide Leaf Springs constructed with H.D. spring steel Measured Length = Center of Bushing to End of Spring in a straight line, no load on spring

# Axle Components

## Springs, Slipper Springs



9312010



BT2512

C5SPRING

### F: Spring Style (See Chart Below for Description)

Item Number	Alias number	Description	Extra Info	SO	A	B	C	D	E	F
072-021-00		Slipper Spring	Dexter	Yes	30in	2.50in	----	5	10K	Flat End
072-043-01		Spring Slipper	Dexter	Yes	30in	3in	.402in	5	10K	Flat End
072-077-00		Slipper Spring	Dexter	Yes	30in	2.5in	----	5	10K	Flat End
072-080-01		Spring Per Slipper	Dexter	Yes	30in	2.5in	.43in	5	10K	Flat End
093175		Spring Slipper	Al-Ko	Yes	----	----	----	4	4.5K	Hook End
72-48		Spring Slipper	Dexter	Yes	43.75in	3in	----	3	20K	Simi
9312010	120-3T3	Slipper Spring	Tuff-Tow		26.5in	2in	.365in	5	7K	Hook End
93161		Slipper Spring	Tuff-Tow		32.5in	2.50in	.43	5	10K	Flat End
93165		Slipper Spring	Tuff-Tow		26.5in	2in	.359in	7	8K	Hook End
93167		Slipper Spring	Tuff-Tow		26.5in	2in	.325in	4	4K	Hook End
93170		Slipper Spring	Tuff-Tow		29.5in	2in	.40in	6	8K	Hook End
9318211		Spring Slipper	Al-Ko	Yes	32.5in	2.5in	----	6	12K	Hook End
BT2512		Slipper Spring	Tuff-Tow		25in	1.75in	.279in	4	2.5K	Flat End
BT2515		Slipper Spring	Tuff-Tow		25in	1.75in	.323in	3	3K	Flat End
BT2522		Slipper Spring	Tuff-Tow		25in	1.75in	.362in	3	3.5K	Flat End
BT2525		Slipper Spring	Tuff-Tow		25in	1.75in	.340in	5	5K	Flat End
BT2530		Slipper Spring	Tuff-Tow		25in	1.75in	.365in	4	4.7K	Flat End
BT256		Slipper Spring	Tuff-Tow		25in	1.75in	.271in	2	1.250K	Flat End
BT259		Slipper Spring	Tuff-Tow		25in	1.75in	.271in	3	1.900K	Flat End
C3SPRING		Slipper Spring	Tuff-Tow		26.25in	1.75in	.359in	3	3.5K	C-Hook
C4SPRING		Slipper Spring	Tuff-Tow		26.25in	1.75in	.365in	4	4.7K	C-Hook
C5SPRING		Slipper Spring	Tuff-Tow		26.25in	1.75in	.365in	5	5.7K	C-Hook
C6SPRING		Slipper Spring	Tuff-Tow		26.25in	1.75in	.365in	6	6.6K	C-Hook

## Spring Kits



LC235476



LC213189

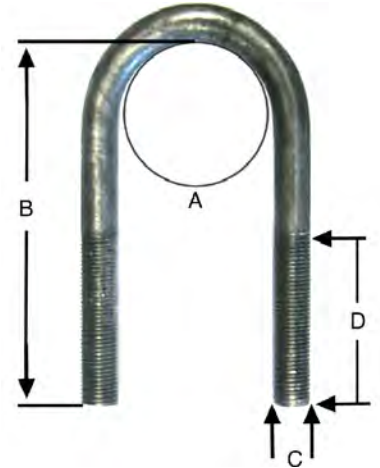
Item Number	Description
LC213187	Spring & Hardware Kit 2K Pair
LC213188	Spring & Hardware Kit 3.5K Pair
LC213189	Spring & Hardware Kit 5.2K Pair
LC213190	Spring & Hardware Kit 6K Pair 4L
LC213191	Spring & Hardware Kit 7K Pair 6L
LC213192	Spring & Hardware Kit 7K Pr Slipper
LC235476	Spring & Hardware Kit 8K Pr Slipper

# Axle Components

## U-Bolt Round

E: Mfg.

Item Number	Description	SO	A	B	C	D	E
011-018-00	Round U-Bolt	Yes	3.12in	7.05in	1/2-20	2in	Dexter
011-065-00	Round U-Bolt 8K	Yes	3.56in	7.84in	9/16-18	2in	Dexter
011-070-00	Round U-bolt		5	9.61in	3/4-10	2.5	Dexter
011-074-01	Round U-Bolt	Yes	2.375in	5.13in	7/16-20	2in	Dexter
011-077-00	Round U-Bolt	Yes	5.13in	8.94in	5/8-11	2.20in	Dexter
5913	Round U-Bolt	Yes	5in	10.5in	5/8-20	----	Al-Ko
91104	Round U-Bolt		1-3/4in	4-1/2in	1/2-20	1-7/8in	Al-Ko
91154	Round U-Bolt		3-1/2in	8-3/4in	5/8-11	4-1/2in	Al-Ko
LC122070	Round U-Bolt		3in	6.5in	1/2-20	----	Lippert
TTU238	Round U-Bolt		2-3/8in	5-1/4in	1/2-20	----	Tuff-Tow
TTU301R	Round U-Bolt		3in	7-1/8in	9/16-188	4in	Tuff-Tow
U175	Round U-Bolt		1-3/4in	4in	3/8-20	----	Lippert
U238	Round U-Bolt		2-3/8	5-1/4	1/2-20	----	Lippert
U238R	Round U-Bolt		2-3/8in	6-1/8in	1/2-20	3.25in	Tuff-Tow
U301R	Round U-Bolt		3in	7-1/8in	9/16-188	4in	Tuff-Tow
U372	Round U-Bolt		3in	7-1/4in	1/2-20	----	Lippert
U88	Round U-Bolt		3in	8-1/2in	1/2-20	----	Tuff-Tow



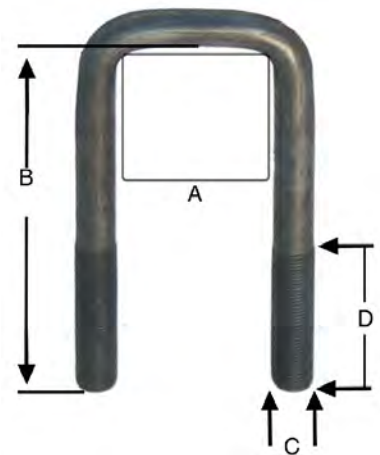
### Torque Specs

U Bolt	Min	Max	U Bolt	Min	Max	U Bolt	Min	Max	U Bolt	Min	Max
3/8	30	50	1/2	45	70	9/16	65	95	5/8	100	120

## U-Bolt Square

E: Mfg.

Item Number	Description	A	B	C	D	E
91110	Square U-Bolt	1-3/4in	4-3/4in	1/2-20	1-7/8in	Al-Ko
91116	Square U-Bolt	1-1/2in	4-3/4in	1/2-20	2-1/8in	Al-Ko
P32330	Square U-Bolt	1-1/2in	3.562in	3/8-16	----	UFP
P32438	Square U-Bolt	2in	7.25in	1/2-13	----	UFP
P32441	Square U-Bolt	2in	6-1/2in	1/2-13	----	UFP
P32660	Square U-Bolt	3in	3-1/8in	7/16-14	----	UFP
P32661	Square U-Bolt	4in	3-1/8in	7/16-14	----	UFP
P32662	Square U-Bolt	3in	4-1/8in	7/16-14	----	UFP
P33994	Square U-Bolt	2in	7.25in	1/2-13	2-1/4in	UFP
P34143	Square U-Bolt	2in	6-1/2in	1/2-13	----	UFP
P34144	Square U-Bolt Zinc	2in	5-5/16in	1/2-13	----	UFP
P34145	Square U-Bolt	2in	7-1/4in	1/2-13	----	UFP
P34146	Square U-Bolt	2in	4-9/16in	1/2-13	----	UFP
TD86230	Square U-Bolt	3-1/16in	3-5/16in	7/16-14	1-3/4in	Tie Down
U18	Square U-Bolt	2-1/2in	6-3/4in	9/16-18	----	Tuff-Tow
U4	Square U-Bolt	1-1/2in	4-1/2in	9/16-18	3.5in	Tuff-Tow
U7	Square U-Bolt	1-3/4in	5-3/4in	9/16-18	3.5in	Tuff-Tow
U8	Square U-Bolt	2in	5-3/4in	9/16-18	3.5in	Tuff-Tow
U9	Square U-Bolt	2in	6.35in	9/16-18	3in	Tuff-Tow



# Axle Components

## U-Bolt Square

### U-Bolt Kit Breakdown List



U-Bolt Kit	U-Bolt	Tie Plate	Nuts	Washer
U100	U175	LC237433	LC139725	---
U101	U238	P238	LC122079	---
U102	U238R	P238	LC122079	---
U103	LC122070	P300	LC122079	---
U104	U238	LC133766	LC122079	---
U105	U372	P300	LC122079	---
U106	U372	LC191774	LC122079	---
U108	91154	91235	90622	W-3
U109	U301R	LC191774	UN1	UW1
U110	U8	P4	UN1	---
U111	U8	P4	UN1	UW1
U112	U18	P250	UN1	UW1

## U-Bolt Kits



**A:** Axle Dia. **B:** U-Bolt Length **C:** Bolt Size **D:** Mfg.

Item Number	Description	Extra Info	A	B	C	D
U100	Round U-Bolt Kit 2K	1-3/4in Spring	1-3/4in	4in	3/8-20	Tuff-Tow
U101	Round U-Bolt Kit 3.5K	1-3/4in Spring	2-3/8in	5-1/2in	1/2-20	Tuff-Tow
U102	Round U-Bolt Kit 3.5K	1-3/4in Spring	2-3/8in	6-1/2in	1/2-20	Tuff-Tow
U103	Round U-Bolt Kit 6K	1-3/4in Spring	3in	6-1/2in	1/2-20	Tuff-Tow
U104	Round U-Bolt Kit 3.5K	2in Spring	2-3/8	5in	1/2-20	Tuff-Tow
U105	Round U-Bolt Kit 7K	1-3/4in Spring	3in	7-1/4in	1/2-20	Tuff-Tow
U106	Round U-Bolt Kit 7K	2in Spring	3in	7-1/4in	1/2-20	Tuff-Tow
U108	Round U Bolt Kit 8K	2in Spring	3-1/2in	8-3/4in	----	Tuff-Tow
U109	Round U-Bolt Kit 7-8K	2in Spring	3in	7-1/8in	9/16-188	Tuff-Tow
U110	Square U-Bolt Kit 3.5K	1-3/4in Spring	2in	5-3/4in	9/16-18	Al-Ko
U111	Square U-Bolt Kit 3.5K	1-3/4in Spring	2in	5-3/4in	9/16-18	Tuff-Tow
U112	Square U-Bolt Kit 5.2K	1-3/4in Spring	2.5in	6-3/4in	9/16-18	Tuff-Tow

Axle Components

# Axle Components

## Tie plates



012-049-00



091224  
LC133766



091232  
LC191774



09123724



09123725



91226



91235



LC237433



P238



P250



P300



P34148



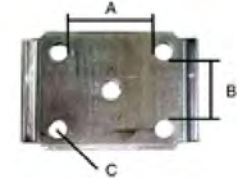
P32491



P4



P6



D: Mfg.

Item Number	Description	SO	A	B	C	D
012-037-01	Tie Plate 8K	Yes	3-1/2 in	2-9/16in	----	Dexter
012-046-00	Tie Plate 5in.Tube 3/4in Bolt	Yes	----	----	----	Dexter
012-049-00	Tie Plate	Yes	5in	2-1/2in	5/8in	Dexter
091224	Tie Plate	Yes	2-3/8in	2in	1/2in	Al-Ko
091232	Tie Plate	Yes	3in	2in	5/8in	Al-Ko
09123716	Tie Plate	Yes	5in	2-1/2in	----	Al-Ko
09123724	Tie Plate Shock		2-3/8in	1-3/4in	1/2in	Al-Ko
09123725	Tie Plate Shock		3in	1-3/4in	1/2in	Al-Ko
91226	Tie Plate		1-3/4in	1-3/4in	1/2in	Al-Ko
91235	Tie Plate		3-1/2in	2in	5/8in	Phoenix
LC133766	Tie Plate		2-3/8in	2in	1/2in	Lippert
LC191774	Tie Plate		3in	2in	1/2in	Lippert
LC237433	Tie Plate		1-3/4in	1-3/4in	3/8in	Lippert
P238	Tie Plate		2-3/8in	1-3/4in	1/2in	Lippert
P250	Tie Plate		2-1/2in	1-3/4in	9/16in	Tuff-Tow
P300	Tie Plate		3in	1-3/4in	1/2in	Lippert
P32491	Tie Plate		2in	1-3/4in	1/2in	UFP
P34148	Tie Plate 5 Hole Zinc		2in	1-3/4in	1/2in	UFP
P4	Tie Plate		2in	1-3/4in	9/16in	Tuff-Tow
P6	Tie Plate		1-3/4in	1-3/4in	9/16in	Tuff-Tow

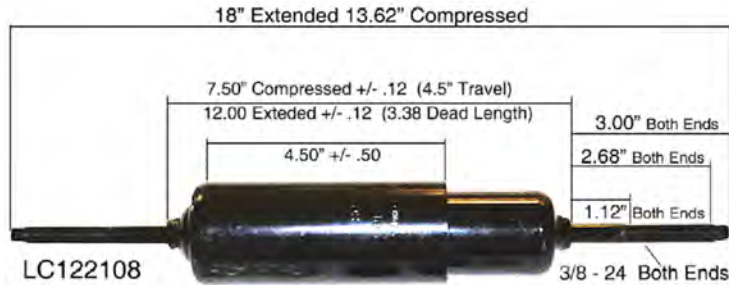
# Axle Components

## Shocks



K71-175-01

Item Number	Description	Extra Info	A
09351605	Top Shock Mounting Bracket	Single	Al-Ko
K71-175-01	Shock w/Kit	Pair	Dexter
LC122108	Shock w/Mount Kit	Single	Lippert



## Spring Pads



A: Tube Dia. B: Width C: MFG

Item Number	Description	SO	A	B	C
003-001-00	Spring Pad 6K		3in	----	Dexter
003-001-02	Spring Pad 7K		3in	1-7/8in	Dexter
003-042-00	Spring Pad 5.2K		3in	1-5/8in	Dexter
003-043-00	Spring Pad 3.5K		2.38in	----	Dexter
090308	Spring Pad		5in	2.5in	Al-Ko
090320	Spring Pad	Yes	3.5in	2.25in	Al-Ko
09032102	Spring Pad w/Conversion Kit		3in	1-7/8in	Al-Ko
09032104	Spring Pad w/Conversion Kit		2-3/8in	1-7/8in	Al-Ko
90315	Spring Pad		3in	2in	Al-Ko
90316	Spring Pad Round		3.5in	2in	Al-Ko
K71-384-00	Spring Pad Axle Flip Kit		2-3/8in	1-5/8in	Dexter
K71-385-00	Spring Pad Axle Flip Kit		3in	1-3/4in	Dexter
LC139875	Spring Pad Round		1-3/4in	1-7/8in	Lippert
LC177044	Spring Pad Round		2-3/8in	1-3/4in	Lippert
LC180807	Spring Pad		3in	1-7/8in	Lippert
P33513	Spring Pad		2in	2in	UFP
SP2X2	Spring Pad Square		2in	2in	Tuff-Tow

Axle Components

# Axle Components

## Spindles



**A:** Stub Dia. **B:** Stub Length **C:** Overall Length **D:** Capacity **E:** Thread Dia.

Item Number	Description	Extra Info	SO	A	B	C	D	E
AGS-3560E	Round AG Spindle	Reliable		1.75in	7-5/8in	12in	3.56K	7/8-14
AGS-6000F	Round AG Spindle	Reliable		2.75in	8-1/2in	14in	6K	1-14
LC122255	Zirk Fitting	Lippert		.25in	.203in	.5781in	----	----
R104-BT116	Round Spindle Use L44649 bearing	Tuff-Tow		1.25in	3-1/2in	8-1/4in	2K	1-14
R104-BT12	Round Spindle Use L44643 bearing	Tuff-Tow		1.25in	3-1/2in	8-1/4in	2K	1-14
R204-84	Round Spindle	Al-Ko		1.5in	4in	8-7/8in	3.5K	1-14
R204-BT12	Round Spindle 1in grind	Tuff-Tow		1.5in	3.5in	9in	2K	1-14
R204-BT16	Round Spindle 1-1/16in grind	Tuff-Tow		1.5in	3-1/2in	8-1/2in	2K	1-14
R206-84	Round Spindle	Al-Ko		1.75in	6in	10.75in	3.5K	1-14
R305-84	Round Spindle	Tuff-Tow		1.75in	3-1/2in	8-1/4in	3.5K	1-14
R406-42	Round Spindle	Al-Ko		2in	5-3/4in	11-1/8in	5.2-7K	1-14
R506-42	Round Spindle	Tuff-Tow		2.25in	6in	11in	5.2-7K	1-14
SP20484	Square Spindle	Tuff-Tow		1.5in	3-1/2in	8-1/4in	3.5K	1-14
SP-20484F-725	Square Spindle	Tuff-Tow		1.50in	2.53in	7.25in	1.75	1-14
SP204BT116	Square Spindle 1-1/16	Tuff-Tow		1.5in	3-1/4in	8-1/4in	2K	1-14
SP204BT12	Square Spindle 1in grind	Tuff-Tow		1.5in	3-1/4in	8-1/4in	2K	1-14
SP355-84	Square Spindle	Tuff-Tow		1.75in	6in	10-7/8in	3.5K	1-14
SP406-42	Square Spindle	Tuff-Tow		2in	6in	11in	5.2-7K	1-14
SP-50642F-SQNW	Square Spindle	Tuff-Tow		2in	5.93in	11in	3.5K	1-14
SP-TB-175FNW	Flanged Spindle	Tuff-Tow		2.03in	4.75in	7.63in	1.75K	1-14
SP-TT-175AF	Flanged Spindle	Tuff-Tow		2.45in	2.77in	8.13in	1.75K	1-14
SP-TT-175F	Flanged Spindle	Tuff-Tow		1.95in	2.77in	8.13in	1.75K	1-14
SP-UT-300FNW225	Flanged Spindle	Tuff-Tow		2.45in	2.64in	9.89in	3K	1-14

**AGS Spindles Do not Include Nut or Washer.**

AGS-3560E Nut: SN-875 Washer: SW-875  
 AGS-6000F Nut: SN-1001 Washer: SW-1001

# Axle Components

## Brake Flanges

A: Hole Dia. B: Axle Size C: Stud Holes D: Mfg.



Item Number	Description	SO	A	B	C	D
<b>004-050-00</b>	Brake Flange	Yes	3in	8K	4	Dexter
<b>514001</b>	Square Brake Flange		1.5in	----	4	Hadco
<b>A120</b>	Round Brake Flange		1-3/4in	3.5K	4	Al-Ko
<b>A135</b>	Square Brake Flange		2in	5.2-7K	5	Al-Ko
<b>D4-061-01</b>	Round Brake Flange		2.25in	5.2-7K	5	Dexter
<b>D4-44-0</b>	Round Brake Flange		2.75in	5.2-7K	5	Dexter

## Axle Nuts



A: Bolt Size B: Thread C: Mfg.

Item Number	Description	SO	A	B	C
<b>006-176-00</b>	Spindle Castle Nut	Yes	1in	14	Dexter
<b>006-183-00</b>	Nut Locking		1in	14	Dexter
<b>006-191-00</b>	Axle Nut		1in	14	Dexter
<b>516074</b>	Castle Nut		3/4in	16	Hadco
<b>90601</b>	Axle Castle Nut 10pt		1in	14	Al-Ko
<b>90623</b>	Axle Castle Nut		1-1/2in	12	Al-Ko
<b>K71-335-00</b>	Axle Nut w/Kit		1in	14	Dexter
<b>K71-341-00</b>	Nuts & Washers Unf Spin	Yes	1-3/4in	----	Dexter
<b>K71-367-00</b>	Spindle Nuts & Washers	Yes	1in	14	Dexter
<b>LC122081</b>	Castle Nut		1in	14	Lippert
<b>P32414</b>	Axle Nut		13/16in	20	UFP
<b>SN-1001</b>	Axle Castle Nut		1in	14	Tuff-Tow
<b>SN-625</b>	Axle Castle Nut		5/8in	18	Tuff-Tow
<b>SN-750</b>	Axle Castle Nut		3/4in	16	Tuff-Tow
<b>SN-875</b>	Axle Castle Nut		7/8in	14	Tuff-Tow
<b>TD10665X</b>	Castle Spindle Nut		1in	14	Tie Down
<b>TTSNDTW</b>	Spindle Nut & D Tang Washer Kit		1in	14	Tuff-Tow
<b>TTSNW</b>	Spindle Nut & Round Washer Kit		1in	14	Tuff-Tow

Axle Components



# Axle Components

## Cotter Pins

A: Size B: Mfg.

Item Number	Description	SO	A	B
<b>LC122075</b>	Cotter Pin		.120 x 1-3/4	Lippert
<b>SCP-102</b>	Cotter Pin AGS-6000F Spindles		.174x1-15/16	Reliable



## Bolts



007-007-00



007-135-02



007-187-00  
007-236-01



007-181-00



007-182-00



090746



5821



9070701

A: Diameter B: Length C: Mfg.

Item Number	Description	SO	A	B	C
<b>007-003-01</b>	Bolt Shackle Zinc	Yes	9/16in	3in	Dexter
<b>007-007-00</b>	Bolt Keeper	Yes	5/16in	3.5in	Dexter
<b>007-135-00</b>	Bolt Spring Eye	Yes	3/4in	4.5in	Dexter
<b>007-135-02</b>	Bolt w/Grease Zirk		3/4in	4.5in	Dexter
<b>007-136-00</b>	Bolt Center Equalizer	Yes	----	----	Dexter
<b>007-136-02</b>	Bolt Equalizer 10K	Yes	1-8in	5.25in	Dexter
<b>007-169-00</b>	Hex Cap Screw	Yes	1/8in	5-1/2in	Dexter
<b>007-181-00</b>	Bolt Spring Eye		5/8in	----	Dexter
<b>007-182-00</b>	Bolt Center Non-Greasable		1in	----	Dexter
<b>007-187-00</b>	Bolt Shackle 7/16in Stepdown		9/16in	3in	Dexter
<b>007-236-01</b>	Bolt Shackle w/ Zirk 7/16in Stepdown		9/16in	3.4in	Tuff-Tow
<b>007-254-00</b>	Hex Head Cap Screw		3/8in	3.25in	Dexter
<b>007-260-02</b>	Bolt w/Grease		7/8in		Dexter
<b>00914</b>	Bolt	Yes	.375in	1.5in	Demco
<b>03526</b>	Bolt	Yes	.375in	1.5in	Demco
<b>090746</b>	Bolt Use 006-112-00 Nut		1-8in	6.5in	Al-Ko
<b>5819</b>	Bolt Center	Yes	1in	----	Al-Ko
<b>5821</b>	Spring Eye		3/4in	4.5in	Al-Ko
<b>5831</b>	Bolt Keeper	Yes	3/8-16in	----	Al-Ko
<b>9070701</b>	Carriage Bolt Zirk		7/8in	4.75in	Dexter

Continued on next page.

# Axle Components

## Bolts Bolts (Continued)



**A: Diameter B: Length C: Mfg.**

Item Number	Description	A	B	C
90714	Backing Bolt 12in Brake	7/16in	1in	Tuff-Tow
90725	Bolt Slipper	3/8in	3.5in	Tuff-Tow
90744	Bolt Shackle	9/16in	3.50in	Tuff-Tow
90761	Bolt	3/8in	1in	Tuff-Tow
B2	Bolt Shackle	9/16in	3in	Tuff-Tow
B2W	Bolt Shackle Zirk	9/16in	3in	Tuff-Tow
LC127828	Bolt GR5 Zinc	5/16-18in	3-1/4in	Lippert
P32419	Shackle Bolt	9/16in	3in	UFP
P33090	Bolt	7/16-20	1-1/8in	UFP
P33184	Bolt	5/8-11in	4in	UFP
P34333	Shackle Bolt	9/16in	3in	UFP
TTB2N3	Shackle Bolt & Nut Kit	9/16in	3in	Tuff-Tow
TTB2WN3	Shackle Bolt Wet & Nut Kit	9/16in	3in	Tuff-Tow

# Axle Components

## Nuts



006-007-01



006-011-00



006-038-00



006-084-00



006-092-01



006-112-00



006-113-00



090610



090636



6716



6721



90612L

**A: Bolt Size B: Thread C: Mfg.**

Item Number	Description	SO	A	B	C
006-007-01	Nut Hex Lock Plated		9/16in	18	Dexter
006-011-00	Nut		5/16in	18	Dexter
006-017-01	Nut	Yes	7/16in	20	Dexter
006-038-00	Nut		5/8in	11	Dexter
006-072-00	Locking Hex Nut	Yes	1-1/8in	7	Dexter
006-084-00	Axle Nut		1-3/4in	12	Dexter
006-086-00	Self-Locking Hex Nut	Yes	3/8in	16	Dexter
006-092-01	Nut Flang lock Zinc		7/16in	20	Dexter
006-112-00	Nut		1in	8	Dexter
006-113-00	Nut locking Spring bolt		3/4in	----	Dexter
006-129-00	Nut	Yes	1/2in	----	Dexter
090610	Nut Hex 9-12K		1/4in	20	Al-Ko
090636	Nut Top Lock		1in	14	Al-Ko
09065602	Nut Swiveling Lug	Yes	5/8in	----	Al-Ko
6715L	Nut Spring Eye 10-16K	Yes	----	----	Al-Ko
6716	Nut	Yes	1in	----	Al-Ko
6721	Nut Keeper	Yes	3/8in	16	Al-Ko
90612L	Nut		7/8in	9	Tuff-Tow

Continued on next page.

# Axle Components

## Nuts Nuts (Continued)



90617



90618



90622



90625



90626



90629



90637



LC122079



LC122085



LC122103



LC125081  
LC127799



LC139725



N3



P32432



P33430



UN1

**A: Bolt Size    B: Thread    C: Mfg.**

Item Number	Description	A	B	C
90617	Nut	1/2in	20	Tuff-Tow
90618	Nylon Hex Nut	----	----	Tuff-Tow
90622	Nut	5/8in	11	Al-Ko
90625	Nut	3/8in	24	Tuff-Tow
90626	Castle Nut	3/4in	16	Al-Ko
90629	Nut	3/8in	16	Tuff-Tow
90637	Nut	3/4in	16	Al-Ko
LC122079	Flange Nut	1/2in	20	Lippert
LC122085	Nut	7/16in	20	Lippert
LC122103	Flange Nut	7/16in	20	Lippert
LC125801	Nut Prevailing Tor Z	9/16in	18	Lippert
LC127799	Nut Crush Nut Zinc	5/16in	18	Lippert
LC139725	Nut Flanged YZ	3/8in	24	Lippert
N3	Locking Nut	9/16in	18	Tuff-Tow
P32432	Nut	9/16in	18	UFP
P33209	Nut	----	----	UFP
P33430	Nut	----	----	UFP
UN1	Nut	9/16in	18	Tuff-Tow

Axle Components

# Axle Components

## Wheel Nuts & Rim Clamps



A: Stud Size    B: Length    C: MFG

Item Number	Description	SO	Color	A	B	C
006-005-00	Nut Rim Clamp	Yes		9/16-18in	----	Dexter
006-118-00	Nut 2pc Flange M22x1.5	Yes		----	----	Dexter
015-002-00	Clamp Rim	Yes		----	----	Dexter
090633	Flanged Wheel Nut			5/8in	1.063in	Lippert
090643	Wheel Nut 90 Deg			5/8in	.655in	Lippert
09065105	Flanged Wheel Nut			3/4in	1.060in	Al-Ko
090652	Acorn Nut Bulge Style			1/2-20in	1.384in	Excalibur
090653	Acorn Nut Bulge Style			9/16in	1.72in	Excalibur
20405	Acorn Wheel Lock			1/2-20	----	Excalibur
90702	Wheel Bolt			1/2-20in	1-7/8in	Al-Ko
9150102	Rim Clamps SM/H-Style			5/8in	----	Tuff-Tow
ACL20405	Acorn Wheel Lock Set of 4			1/2-20in	----	Tuff-Tow
LC122076	Acorn Open Nut 60 Deg		Zinc	1/2-20in	13/16	Lippert
LC134581	Wheel Nut			9/16in	18	Lippert
P32494	Cone Nut 60 Deg			----	----	UFP

## Shackle Links

A: Center Hole To Center Hole    B: Thickness    C: Mfg.

Item Number	Alias number	Description	SO	A	B	C
018-022-01		Shackle Link HD		3-1/8in	1/2in	Dexter
018-024-01		Shackle Link Short HD		2-1/4in	1/2in	Dexter
018-026-00		Shackle Link Asy Short		2-1/4in	1/2in	Dexter
018-027-01		Shackle Link Asy	Yes	----	4ga	Dexter
91801		Shackle		2in	4ga	Al-Ko
91802		Shackle		2.56in	4ga	Al-Ko
9181203		Shackle w/Bolt		2.25in	4ga	Dexter
L1		Shackle Link 1.5w .24 th		2.25in	1/4in	Phoenix
LC105882		Shackle		2.25in	4ga	Lippert
LC122102		Bolt Shackle 9/16x2 7/8 Step		2.25in	4ga	Lippert
LC125675		Shackle w/Bolt		2.25in	4ga	Lippert
LC133477	91803	Shackle		3.125in	4ga	Lippert
P34332		Shackle		2.25in	4ga	UFP
TTSL2250		Shackle-4 per Kit		2.25in	4ga	Tuff-Tow
TTSL3125		Shackle-4 per Kit		3.125in	4ga	Tuff-Tow



Axle Components

# Axle Components

## Washers



A: ID B: Thickness C: OD D: Mfg.

Item Number	Description	SO	A	B	C	D
005-023-00	Spindle Washer		1in	0.127in	1.67in	Dexter
005-057-00	D-Style Washer 5.2K/8K		1in	0.134in	2.205in	Dexter
005-059-00	Washer Tang 10/12/15K		1.75in	0.075in	3.17in	Dexter
005-060-00	Washer		1.75in	0.134in	3.02in	Dexter
005-067-00	Wing Washer	Yes	0.5in	0.18in	2.5x.60in	Dexter
005-070-00	Tongue Washer		1.535in	0.132in	2.24in	Dexter
005-071-00	Washer Tang 9-10K RD		1.50in	0.078in	2.89in	Dexter
005-147-01	Washer	Yes	1in	0.25in	2.25in	Dexter
005-149-00	Washer for 50mm Cartridge Bearing		1.06	.31	2.48in	Dexter
006-190-00	Retainer Cage Clip 2-6K		1in	0.04in	1.54in	Dexter
05424	Locking Washer		.3125in	.053in	.593in	Demco
090502	Locking Washer		.25in	.075in	.478in	Al-Ko
090534	Locking Washer		.50in	.132in	.862in	Tuff-Tow
092-002-00	Torque Label Washer		1in	0.006in	1.4in	Dexter
09680824	Washer Snap Ring	Yes	N/A	N/A	N/A	Al-Ko
270	Tooth Spindle Washer		1in	.116in	1.812in	Hadco
271	Tooth Spindle Washer		.75in	.074in	1.50in	Hadco
9050901	Washer		1in	.136in	2.00in	Al-Ko
90525	Washer		1.375in	.146in	3.010in	Al-Ko
AGLS813	Shield Nut Lock		.845in	.234in	1.14in	Reliable
F436	Washer		5/8in	0.095in	1.47in	Tuff-Tow
LC119214	Washer		1in	.126in	1.692in	Lippert
LC119215	D-Flat Washer		1in	.115in	1.674in	Lippert
LC119216	D-Tang Washer		1in	.058in	1.568in	Lippert
P32402	Carburized Washer		.750in	.09375in	1.625in	UFP
P32408	Washer		.4375in	.036in	.740in	UFP
P32418	Shield Nut Lock		.845in	.281in	1.14in	UFP
P33189	Flat Washer		.625in	0.096in	1.325in	UFP
P33210	Flat Washer 7/8in		.943in	0.137in	1.75in	UFP
P33509	Washer		.811in	.180in	1.647in	UFP
SW-1001	Washer		2.13in	.234in	2.154in	Tuff-Tow
SW-625	Washer		.656in	.177in	1.312in	Tuff-Tow
SW-875	Washer		.983in	.177in	2.003in	Tuff-Tow
TD10528Z	Spring Washer		1in	0.113in	2.02in	Tie Down
UW1	Locking Washer		.5625in	.151in	.957in	Tuff-Tow
W-3	Locking Washer		.625in	.168in	1.066in	Tuff-Tow

# Axle Components

## Bushings



**A: Outer Diameter B: Inner Diameter C: Length D: MFG**

Item Number	Description	SO	A	B	C	D
<b>014-069-00</b>	Bushing	Yes	2.06in	1in	3.12in	Dexter
<b>014-073-01</b>	Bushing		1.30in	.646	2.18in	Dexter
<b>072-010-02</b>	Bushing	Yes	----	----	----	Dexter
<b>091413</b>	Bushing Rubber		1-3/4in	3/4in	2.75L	Al-Ko
<b>091414</b>	Bushing Rubber		2-1/8	1in	----	Al-Ko
<b>91402</b>	Bushing		1.25in	9/16in	1in	Al-Ko
<b>9160</b>	Bushing		3/4 in	9/16in	1.75in	Tuff-Tow
<b>9160S</b>	Bushing		11/16in	9/16in	1.75in	Tuff-Tow
<b>D14-54</b>	Bushing		1.25in	9/16in	2in	Dexter
<b>D14-77</b>	Brass Bushing		11/16in	9/16in	1.75in	Dexter
<b>K71-291-00</b>	Bushing	Yes	----	----	----	Dexter
<b>K71-372-00</b>	Bushing Rubber Equal 10K-15K		----	----	----	Dexter
<b>MPE228</b>	Bushing		1in	9/16in	1.75in	Al-Ko
<b>NB-20</b>	Bushing		11/16in	9/16in	2in	Tuff-Tow
<b>NB-30</b>	Bushing		1-1/16in	7/8in	2 7/8in	Tuff-Tow
<b>P34301</b>	Bushing for Shock		----	----	----	UFP
<b>TTNB1</b>	Nylon Bushing 9160s kit 4 pack		----	----	----	Tuff-Tow

# Axle Components

## Studs & Wheel Bolts Drive In Studs



Item Number	Description	Extra Info	SO	A	B	C	D	E	F
007-246-00	Press-In Stud	Drive	Yes	1/2-20in	1.93in	.25in	.57in	.54in	Dexter
007-257-00	Stud	Drive		9/16in	2.49in	.49in	.98in	.685in	Dexter
090737	Stud	Drive		5/8in	2.95in	.51in	.80in	.68in	Al-Ko
09251525	Wheel Stud Long Knurl	Drive	Yes	1/2-20in	1.81in	----	----	.542in	Al-Ko
568262	Stud Hub to Drum	Drive	Yes	1/2-13in	1.45in	N/A	N/A	N/A	Al-Ko
9251100	Stud	Drive		9/16in	2-3/4in	.17in	1.15in	.62	Al-Ko
9251510	Stud	Drive		1/2in	1-3/4in	.18in	.54in	.542in	Al-Ko
9251512	Stud	Drive		1/2in	2-1/2in	.60in	1.22in	.542in	Al-Ko
9251513	Stud	Drive		5/8in	3.20in	1/2in	1.42in	.67in	Al-Ko
D7-041	Press-In Stud	Drive		7/16in	.81in	.100in	.29in	.524in	Dexter
D7-115	Press-In Stud	Drive		5/8in	3-1/8in	1/2in	1-1/4in	.69in	Dexter
D7-122	Stud	Drive		1/2in	1-13/16in	.32in	.73in	.612in	Dexter
D7-132	Press-In Stud	Drive		9/16in	2.25in	.25in	1.02in	.69in	Dexter
D7-223	Stud	Drive		9/16in	2in	1/4in	.58in	.69in	Dexter
D7-224	Stud	Drive		5/8in	2-1/2in	1/4in	1.06in	.69in	Dexter
D7-262	Press-In Stud	Drive		1/2in	2.66in	.584in	1.34in	.545in	Dexter
DI-0508100	Press-In Stud	Drive		1/2in	1.65in	.395in	.45in	.614in	Titan
LC121803	Stud YZ	Drive		1/2-20	1.97in	.369in	.695in	.615in	Lippert
LC132624	Bolt GR8	Drive		9/16-18in	2-5/16in	.41in	.58in	.617in	Lippert
LC136109	Bolt GR5	Drive		1/2-20in	1.75in	.41in	.41in	.545in	Lippert
LC175704	Stud SZ	Drive		9/16-18	2.30in	.31in	1.06in	.689in	Lippert
LC175705	Stud BP	Drive		5/8-18	2.75in	.31in	1.01in	.685in	Lippert
LC181677	Bolt Wheel Stud	Drive		1/2-20in	1.988in	.512in	.591in	.54in	Lippert
LC181678	Bolt Wheel Stud	Drive		1/2-20in	2.520in	.827in	1.102in	.54in	Lippert
LC181679	Bolt Wheel Stud	Drive		9/16-18in	2.819in	.591in	1.063in	.62in	Lippert
P32498	Press-Fit Stud	Drive		1/2in	1-11/16in	3/8in	17/32in	9/16in	UFP
P32855	Stud	Drive		1/2in	2in	1/4in	7/8in	9/16in	UFP
ST-504	Press-In Stud	Drive		1/2-20in	2.093in	.656in	.656in	.609in	Reliable

Axle Components



# Axle Components

## Studs & Wheel Bolts Screw In Studs



007-244-00  
007-245-00



90709



D025-053-01



D25-11



D25-45



LB-509



P32416



### Screw In Studs

Screw in studs are threaded on both ends

A: Thread Diameter B: Overall Length C: Lug Nut End Length D: Hub end length

F: Mfg.

Item Number	Description	Extra Info	A	B	C	D	E
007-244-00	Stud Hub to Drum	Screw	1/2in	1.715in	N/A	N/A	Dexter
007-245-00	Bolt Stud	Screw	1/2in	1.41in	N/A	N/A	Dexter
025-014-00	Stud	Screw	1/2in	2.53in	1in	1.125in	Dexter
90709	Wheel Bolt 60 Deg	Screw	1/2in	1in	N/A	N/A	Tuff-Tow
D025-053-01	Screw-In Stud	Screw	1/2in	2in	1.18in	3/4in	Dexter
D25-11	Screw-In Stud	Screw	9/16in	3in	1.33in	3/4in	Dexter
D25-45	Screw-In Stud	Screw	5/8in	2-1/2in	1.25in	3/4in	Dexter
LB-509	Wheel Bolt 90 Deg	Screw	1/2in	1in	N/A	N/A	Tuff-Tow
P32416	Wheel Bolt 60 Deg	Screw	1/2-20in	1-5/8in	N/A	N/A	UFP

# Axle Components



## 4 Lug

The distance from the center of two holes directly across from one another.

### Hubs

#### Hubs 4 Lug

**A:** Bolt Pattern **B:** Pilot Hole **C:** Stud Size **D:** MFG



Item Number	Description	SO	A	B	C	D
LC134574	Hub 2K		440	2.475in	1/2in	Lippert
LC134574-K1	Hub w/Kit 2K		440	2.475in	1/2in	Tuff-Tow
LC134574-K2	Hub w/Kit 2K		440	2.475in	1/2in	Tuff-Tow

### Drums

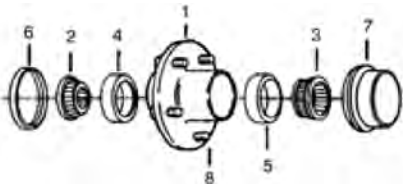
#### Drums 4 Lug

**A:** Bolt Pattern **B:** Drum Size **C:** Stud Size **D:** MFG



Item Number	Description	SO	A	B	C	D
008-173-91	Hub & Drum Electric		440	7in	1/2in	Dexter
008-276-05	Hub & Drum Hydraulic		440	7in	1/2in	Dexter
008-276-05K1	Hub & Drum w/Kit Hydraulic		440	7in	1/2in	Tuff-Tow

### Hub & Drum Components Chart



1. HUB 2. INNER BEARING  
3. OUTER BEARING 4. INNER RACE  
5. OUTER RACE 6. GREASE SEAL  
7. GREASE CAP 8. STUD

#### 4 Lug Break Down Chart

Item	Inner	Outer	Seal	Cap	Stud	Kit
LC134574	L44643 or L44649/ L44610	L44643 or L44649/ L44610	LC139514	092102	9251523	Kit 1
			AB12192			Kit 2
LC134574-K1	L44649/L44610	L44649/L44610	AB12192	092102	9251523	Kit 1
LC134574-K2	L44643/L44610	L44643/L44610	LC139514	092102	9251523	Kit 2
008-173-91	L44649 / L44610	L44649/L44649	LC139514	092102	D7-246	w/Kit 1
008-276-05	L44649/L44610	L44649/L44610	LC139514	092102	D7-246	Kit 1
008-276-05K1	L44649/L44610	L44649/L44610	LC139514	092102	D7-246	Kit 1

# Axle Components

**5 Hole Only.** *See following pages for bearing specs.*

Measure the distance from the center of the first hole to the outside of the third hole directly across from one another.



## Hubs Hubs 5 Lug



008-248-05



008-256-05 LC158529  
008-256-07 LC163568  
17214 P33693  
521004  
LC122098  
LC137860



522061



TD81017  
TD81022  
TD81093

**A: Bolt Pattern B: Pilot Hole C: Stud Size D: MFG**

Item Number	Description	SO	A	B	C	D
008-248-05	Hub 3.5K		545	2.595in	1/2in	Dexter
008-256-05	Hub 3.5K		555	---	1/2in	Dexter
008-256-07	Hub 3.5K		550	---	1/2in	Dexter
17214	Hub 2K		545	2.75in	1/2in	Titan
521004	Hub 3.5K		545	2.80in	1/2in	Hadco
522061	Hub 3.5K		545	2.60in	1/2in	Hadco
LC122098	Hub 3.5K		545	2.60in	1/2in	Lippert
LC122098-K3	Hub w/Kit 3.5K		545	2.60in	1/2in	Tuff-Tow
LC134332	Hub 2K 5.6 Face		545	2.469in	1/2in	Lippert
LC134332-K1	Hub w/Kit 2K		545	2.469in	1/2in	Tuff-Tow
LC134332-K2	Hub w/Kit 2K		545	2.469in	1/2in	Tuff-Tow
LC137860	Hub 3.5K		550	2.60in	1/2in	Lippert
LC137860-K3	Hub w/Kit 3.5K		550	2.60in	1/2in	Tuff-Tow
LC158529	Hub 2K 6.5 Face		545	2.485in	1/2in	Lippert
LC158529-K1	Hub w/Kit 2K		545	2.485in	1/2in	Tuff-Tow
LC158529-K2	Hub w/Kit 2K		545	2.485in	1/2in	Tuff-Tow
LC163568	Hub 3.5K		5475	2.60in	1/2in	Lippert
LC163568-K3	Hub w/Kit 3.5K		5475	2.60in	1/2in	Tuff-Tow
TD81017	Hub Kit 1350lb Assy		545	---	1/2in	Tie Down
TD81022	Hub Kit 1750lb Assy		545	---	1/2in	Tie Down
TD81093	Hub Kit 1750lb Galv w/nuts		545	---	1/2in	Tie Down

545= 5 on 4-1/2 550= 5 on 5 555= 6 on 5-1/2 660= 6 on 6 Ag 5475= 5 on 4-3/4 555= 5 on 5-1/2 865= 8 on 6-1/2 888= 8 on 8 Ag

Axle Components

# Axle Components

## Drums Drums 5 Lug



**A:** Bolt Pattern **B:** Pilot Hole **C:** Drum Size **D:** Stud Size **E:** MFG

Item Number	Description	SO	A	B	C	D	E
008-174-05	Hub & Drum Demountable		5on9-3/4	2.56in	12x2in	9/16in	Dexter
008-247-05	Hub & Drum		545	2.56in	10x2.25in	1/2in	Dexter
008-249-05	Hub & Drum		555	2.56in	10x2.25in	1/2in	Dexter
008-249-07	Hub & Drum		550	2.56in	10x2.25in	1/2in	Dexter
008-257-05	Hub & Drum Electronic		545	2.56in	7x1-1/4in	1/2in	Dexter
008-257-05K1	Hub & Drum w/Kit		545	2.56in	7x1-1/4in	1/2in	Tuff-Tow
008-271-07	Hub & Drum Hydraulic		545	2.56in	7x1-3/4in	1/2in	Dexter
008-283-05	Hub & Drum Short Spindle 2.8K		545	2.32in	10x1.5in	1/2in	Dexter
LC126003	Hub & Drum		545	2.56in	10x2.25in	1/2in	Tuff-Tow
LC126003-K3	Hub & Drum w/Kit		545	2.56in	10x2.25in	1/2in	Tuff-Tow
LC136367	Hub & Drum		550	2.56in	10x2.25in	1/2in	Lippert
LC136367-K3	Hub & Drum w/Kit		550	2.56in	10x2.25in	1/2in	Tuff-Tow
LC136368	Hub & Drum		5475	2.56in	10x2.25in	1/2in	Lippert
LC136368-K3	Hub & Drum w/Kit		5475	2.56in	10x2.25in	1/2in	Tuff-Tow
LC137514	Hub & Drum		555	2.56in	10x2.25in	1/2in	Lippert
LC137514-K3	Hub & Drum w/Kit		555	2.56in	10x2.25in	1/2in	Tuff-Tow
P11204	Drum Assembly 3750lbs	Yes	545	2.25in	10in	1/2in	UFP
P33647	Hub & Drum 1377		545	2.25in	10in	1/2in	UFP
QAK35E545	Quick Axle Kit 3.5K Electric		545	2.56in	10x2.25in	1/2in	Tuff-Tow
QAK35FB545	Quick Axle Kit 3.5K Hydraulic		545	2.56in	10x2.25in	1/2in	Tuff-Tow

545= 5 on 4-1/2 550= 5 on 5 655= 6 on 5-1/2 660= 6 on 6 Ag 5475= 5 on 4-3/4 555= 5 on 5-1/2 865= 8 on 6-1/2 888= 8 on 8 Ag

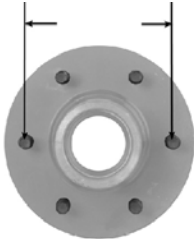
Axle Components

# Axle Components

## Hub & Drum Components Chart 5 Lug Break Down Chart

Item	Inner	Outer	Seal	Cap	Stud	Kit
008-248-05	L68149/68111	L44649/L44610	LC122087	092102	D7-122	Kit 3
008-256-05	L68149/68111	L44649/L44610	LC122087	092102	1/2in	Kit 3
008-256-07	L68149/68111	L44649/L44610	LC122087	092102	1/2in	Kit 3
17214	67048/67010	LM11949/LM11910	AB16235	0432500	DI-0508100	Included
521004	L68149/68111	LM12749/LM12711	AB17235	523046	—	w/Kit 4
522061	L48548/L48510	LM12649/LM12610	ABSE17525631	523046	—	Included
LC122098-K3	L68149/68111	L44649/L44610	LC122087	9210101	LC121803	Kit 3
LC122098	L68149/68111	L44649/L44610	LC122087	9210101	LC121803	Kit 3
LC134332	L44643 or L44649/L44610	L44643 or L44649/L44610	LC139514/AB12192	9210101 092102	LC121803	Kit 1 Kit 2
LC134332-K1	L44649/L44610	L44649/L44610	LC139514	9210101	LC121803	Kit 1
LC134332-K2	L44643/L44610	L44643/L44610	AB12192	092102	LC121803	Kit 2
LC137860	L68149/68111	L44649/L44610	LC122087	9210101	LC121803	Kit 3
LC137860-K3	L68149/68111	L44649/L44610	LC122087	9210101	LC121803	Kit 3
LC158529	L44643 or L44649/L44610	L44643 or L44649/L44610	LC139514 AB12192	9210101	LC121803	Kit 1 Kit 2
LC158529-K1	L44649/L44610	L44649/L44610	LC139514	9210101	LC121803	Kit 1
LC158529-K2	L44643 /L44610	L44643 /L44610	AB12192	092102	LC121803	Kit 2
LC163568	L68149/68111	L44649/L44610	LC122087	9210101	LC121803	Kit 3
LC163568-K3	L68149/68111	L44649/L44610	LC122087	9210101	LC121803	Kit 3
F33693	L68149/L68110	L44649/L44610	AB16255	092102	—	—
F33889	L44649/L44610	L44649/L44610	AB13194/LC139514	092102	—	—
TD81017	L44649/L44610	L44649/L44610	AB12192	TD48355EV	TD11118	—
TD81022	L68149/68111	L44649/L44610	TD11088	TD48355EV	TD11125	—
TD81093	L68149/68111	L44649/L44610	TD11088	092102	TD11125	Kit 3
008-174-05	25580/25520	67048/67010	AB22333	35150	9/16in	—
008-247-05	L68149/68111	L44649/L44610	LC122087	092102	1/2in	Kit 3
008-249-05	L68149/68111	L44649/L44610	LC122087	092102	1/2in	Kit 3
008-249-07	L68149/68111	L44649/L44610	LC122087	092102	1/2in	Kit 3
008-257-05	L44643 or L44649/L44610	L44643 or L44649/L44610	LC139514/AB12192	9210101	007-246-00	Kit 1 & 2
008-257-05K1	L44649/L44610	L44649/L44610	LC139514	9210101	007-246-00	Kit 1
008-271-07	L44649/L44610	L44649/L44610	LC139514	9210101	007-246-00	Kit 1
LC126003	L68149/68111	L44649/L44610	LC122087	9210101	LC121803	Kit 3
LC126003-K3	L68149/68111	L44649/L44610	LC122087	9210101	LC121803	Kit 3
LC136367	L68149/68111	L44649/L44610	LC122087	9210101	LC121803	Kit 3
LC136367-K3	L68149/68111	L44649/L44610	LC122087	9210101	LC121803	Kit 3
LC136368	L68149/68111	L44649/L44610	LC122087	9210101	LC121803	Kit 3
LC136368-K3	L68149/68111	L44649/L44610	LC122087	9210101	LC121803	Kit 3
LC137514	L68149/68111	L44649/L44610	LC122087	9210101	LC121803	Kit 3
LC137514-K3	L68149/68111	L44649/L44610	LC122087	9210101	LC121803	Kit 3
P11204	L68149/68110	L44649/L44610	F07027 / F07028	092102	F32855	—
F33647	L68149/68110	L44649/L44610	F07027 /F07028	092102	F32855	—
QAK35E545	L68149/68111	L44649/L44610	LC122087	9210101	LC121803	Kit 3
QAK35FB545	L68149/68111	L44649/L44610	LC122087	9210101	LC121803	Kit 3

# Axle Components



**6 Lug** *See following pages for bearing specs.*  
 The distance from the center of two holes directly across from one another.

## Hubs Hubs 6 Lug



008-213-09  
LC137859



008-251-05  
521300  
LC144603



09089358



AG2-35660E-03

**A:** Bolt Pattern   **B:** Pilot Hole   **C:** Stud Size   **D:** MFG

Item Number	Description	SO	A	B	C	D
008-213-09	Hub 5.2-6K		655	3.5in	1/2in	Dexter
008-251-05	Hub 3.5K		655	2.48in	1/2in	Dexter
09089358	Hub Ag		660	4.51in	1/2in	Al-Ko
521300	Hub 5.2-6K		655	3.25in	1/2in	Hadco
AG2-35660E-03	Hub Tapped Ag		660	4.62in	1/2in	Reliable
LC137859	Hub 5.2-6K		655	3.5in	1/2in	Lippert
LC137859-K6	Hub w/Kit 5.2-6k		655	3.5in	1/2in	Tuff-Tow
LC137859-K9	Hub w/Kit 5.2-6K		655	3.5in	1/2in	Tuff-Tow
LC144603	Hub 3.5K		655	2.48in	1/2in	Lippert
LC144603-K3	Hub w/Kit 3.5k		655	2.48in	1/2in	Tuff-Tow

### 6 Lug Hub Break Down Chart

Item	Inner	Outer	Seal	Cap	Stud	Kit
008-213-09	25580/25520	15123/15245	LC122088 AB21334	9210102	D7-122	Kit 6 Kit 9
008-251-05	L68149/68111	L44649/L44610	LC122087	9210101	D7-122	Kit 3
9089358	25580/25520	14125A/14276	AB22333	605	—	Kit 8 or 10
521300	LM501349/LM501310	67048/67010	AB203285	523135	—	Kit 7 Included
AG2-35660E-03	69349	67048	ABSE16225643TC	1604	LB509	Kit660
LC137859	25580/25520	15123/15245	LC122088 AB21334	9210102	LC121803	Kit 6 Kit 9
LC137859-K6	25580/25520	15123/15245	LC122088	9210102	LC121803	Kit 6
LC137859-K9	25580/25520	15123/15245	AB21334	9210102	LC121803	Kit 9
LC144603	L68149/68111	L44649/L44610	LC122087	9210102	LC121803	Kit 3
LC144603-K3	L68149/68111	L44649/L44610	LC122087	9210102	LC121803	Kit 3

# Axle Components

## Drums Drums 6 Lug



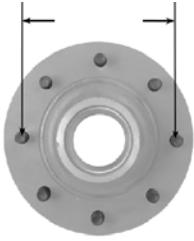
**A:** Bolt Pattern **B:** Pilot Hole **C:** Drum Size **D:** Stud Size **E:** MFG

Item Number	Description	SO	A	B	C	D	E
008-201-05	Hub & Drum 5.2K		655	3.63in	12in	1/2in	Dexter
008-201-09	Hub & Drum 6K		655	3.63in	12in	1/2in	Dexter
008-250-05	Hub & Drum		655	2.63in	10in	1/2in	Dexter
008-388-80	Hub & Drum NevLube		655	4.05in	12in	1/2in	Dexter
568955	Hub & Drum 4.4K		655	2.56in	10x2.25in	1/2	Al-Ko
LC122094	Hub & Drum		655	3.51in	12in	1/2in	Lippert
LC122094-K6	Hub & Drum w/Kit		655	3.51in	12in	1/2in	Tuff-Tow
LC122094-K9	Hub & Drum w/Kit		655	3.51in	12in	1/2in	Tuff-Tow
LC136214	Hub & Drum		655	2.63in	10in	1/2in	Lippert
LC136214-K3	Hub & Drum w/Kit		655	2.63in	10in	1/2in	Tuff-Tow
QAK35E655	Quick Axle Kit 3.5K Electric		655	----	----	----	Tuff-Tow
QAK35FB655	Quick Axle Kit 3.5K Hydraulic		655	3.25in	10x2.25in	1/2in	Tuff-Tow
QAK60E655	Quick Axle Kit 6K Electric		655	----	----	----	Tuff-Tow

### 6 Lug Dum Break Down Chart

Item	Inner	Outer	Seal	Cap	Stud	Kit
TD46233XA	25580/25520	15123/15245	TD11086	35150	TD11119	Kit 6
008-201-05	25580/25520	67048/67010	AB22333	35150	D7-262	Kit 5
008-201-09	25580/25520	15123/15245	AB22333	35150	D7-262	Kit 6
008-250-05	L68149/68111	L44649/L44610	LC122087	9210101	D7-122	Kit 3
008-388-80	Cartridge	031-073-03	No Seal	K71-643-00	D7-122	---
LC122094	25580/25520	15123/15245	LC122088	9210102	LC121803	Kit 6
			AB21334			Kit 9
LC122094-K6	25580/25520	15123/15245	LC122088	9210102	LC121803	Kit 6
LC122094-K9	25580/25520	15123/15245	AB21334	9210102	LC121803	Kit 9
LC136214	L68149/68111	L44649/L44610	LC122087	9210101	LC121803	Kit 3
LC136214-K3	L68149/68111	L44649/L44610	LC122087	9210101	LC121803	Kit 3
568955	L68149/68111	67048/67010	LC122087	092102	9251525	---
QAK35E655	L68149/68111	L44649/L44610	LC122087	9210101	LC121803	Kit 3
QAK35FB655	L68149/68111	L44649/L44610	LC122087	9210101	LC121803	Kit 3
QAK60E655	25580/25520	15123/15245	LC122088	9210102	LC121803	Kit 6
			AB21334			

# Axle Components



**8 Lug** *See following pages for bearing specs.*  
 The distance from the center of two holes directly across from one another.

## Hubs Hubs 8 Lug



008-214-05  
008-288-03



008-231-09



AG2-60880F-04



LC137830



008-287-91

**A:** Bolt Pattern **B:** Pilot Hole **C:** Stud Size **D:** MFG

Item Number	Description	SO	A	B	C	D
008-214-05	Hub 10K		865	4.735in	5/8in	Dexter
008-231-09	Hub 7K		865	----	----	Dexter
008-231-20	Hub 7K		865	----	----	Dexter
008-287-91	Hub 8K		865	4.75in	5/8in	Dexter
008-288-03	Hub 10K	Yes	865	4.75in	5/8in	Dexter
AG2-60880F-04	Hub w/Kit		880	6.0in	5/8in	Reliable
LC137830	Hub 7K		865	4.625in	1/2in	Lippert
LC137830-K10	Hub w/Kit 7K		865	4.625in	1/2in	Tuff-Tow
LC137830-K8	Hub w/Kit 7K		865	4.625in	1/2in	Tuff-Tow

545= 5 on 4-1/2 550= 5 on 5 655= 6 on 5-1/2 660= 6 on 6 Ag 5475= 5 on 4-3/4 555= 5 on 5-1/2 865= 8 on 6-1/2 888= 8 on 8 Ag



Notes:

Axle Components



# Axle Components

## Drums Drums 8 Lug

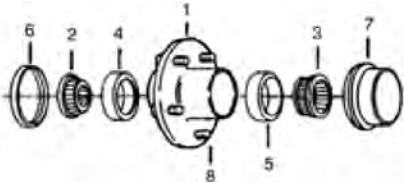


**A:** Bolt Pattern **B:** Pilot Hole **C:** Drum Size **D:** Stud Size **E:** MFG

Item Number	Description	SO	A	B	C	D	E
008-219-04	Hub & Drum	865	865	4.75in	12in	1/2in	Dexter
008-219-09	Hub & Drum 1/2-20 Oil	865	865	----	----	----	Dexter
008-219-13	Hub & Drum	865	865	4.75in	12in	9/16in	Dexter
008-285-08	Hub & Drum	865	865	4.75in	12.25in	5/8in	Dexter
008-285-09	Hub & Drum	865	865	4.75in	12.25in	9/16in	Dexter
008-285-10	Hub & Drum	865	865	4.75in	12.25in	5/8in	Dexter
008-285-11	Hub & Drum	865	865	4.75in	12.25in	9/16in	Dexter
008-385-81	Hub & Drum 7K	865	865	----	12in X2in	9/16in	Dexter
008-393-03	Hub & Drum 7.2K Oil	865	865	4.75in	12.25in	9/16in	Dexter
009-027-01	Drum	865	865	4.75in	12.25in	1/2in	Dexter
009-028-01	Drum	865	865	----	12.25in	----	Dexter
009-044-01	Machined Drum	865	865	4.75in	12.25in	1/2in	Dexter
009-393-03	Hub & Drum 7.2K Oil	865	865	4.75in	12.25in	9/16in	Dexter
09080567	Hub & Drum Coined #99 Spindle Series	865	865	4.75in	12.25in	5/8in	Al-Ko
09080572	Hub & Drum	865	865	4.88in	12.25in	5/8in	Al-Ko
09080644	Hub & Drum 8K	865	865	4.75in	12in	9/16in	Al-Ko
09080654	Hub & Drum 8K	865	865	4.75in	12in	5/8in	Al-Ko
LC122096	Hub & Drum	865	865	4.75in	12in	1/2in	Tuff-Tow
LC122096-K10	Hub & Drum w/Kit	865	865	4.75in	12in	1/2in	Tuff-Tow
LC122096-K8	Hub & Drum w/Kit	865	865	4.75in	12in	1/2in	Tuff-Tow
LC134543	Hub & Drum	865	865	4.75in	12in	9/16in	Lippert
LC148627	Drum w/Bearing 8K	865	865	4.75in	12.25in	5/8in	Lippert
QAK70E865	Quick Axle Kit 7K Electric	865	865	3.25in	12x2in	1/2in	Tuff-Tow

# Axle Components

## Hub & Drum Components Chart



1. HUB 2. INNER BEARING  
 3. OUTER BEARING 4. INNER RACE  
 5. OUTER RACE 6. GREASE SEAL  
 7. GREASE CAP 8. STUD

### 8 Lug Break Down Chart

Item	Inner	Outer	Seal	Cap	Stud	Kit
008-214-05	395S/394A	387A/382A	ABSELJ100	021-036-00	D7-115	—
008-231-09	25580/25520	14125A/14276	LC122088	605	D7-262	Kit 8
008-231-20	25580/25520	14125A/14276	LC122088	605	D7-232	—
AG2-60880F-04	506849/JLM506810	501349/LM501310	ABSE27537525TC	AG-DC-313	—	Kit880
LC137830	25580/25520	14125A/14276	LC122088	9210103	LC121803	Kit 10
			AE21334			Kit 8
LC137830-K10	25580/25520	14125A/14276	AE21334	9210103	LC121803	Kit 10
LC137830-K8	25580/25520	14125A/14276	LC122088	9210103	LC121803	Kit 8
008-219-04	25580/25520	14125A/14276	LC122088	605	D7-262	Kit 8
008-219-13	25580/25520	14125A/14276	LC122088	605	D7-132	—
008-285-08	25580/25520	02475/02420	ABSEL800	605	D7-232	—
008-285-09	25580/25520	02475/02420	ABSEL800	K71-038	D7-132	—
008-285-10	25580/25520	02475/02420	ABSEL800	K71-038	D7-232	—
008-285-11	25580/25520	02475/02420	ABSEL800	605	D7-132	—
008-287-91	25580/25520	02475/02420	ABSEL800	K71-038	D7-232	—
008-288-03	387A/382A	25580/25520	ABSEL600	K71-148-00	D7-115	—
008-393-03	25580/25520	02475/02420	ABSEL800	K71-038	D7-223	—
009-027-01	Slide Over Drum Only	—	—	—	—	—
009-028-01	Slide Over Drum Only	—	—	—	—	—
009-044-01	Slide Over Drum Only	—	—	—	—	—
09080567	28580/28521	25580/25520	ABSEL400	K568220	9251513	—
09080572	28580/28521	25580/25520	ABSEL400	K568220	9251513	—
09080644	25580/25520	02475/02420	ABSEL800	K363587	9251100	Kit13
09080654	25580/25520	02475/02420	ABSEL800	K363587	9251513	Kit12
LC122096	25580/25520	14125A/14276	LC122088	9210103	LC121803	Kit 8
			AE21334			Kit 10
LC122096-K10	25580/25520	14125A/14276	AE21334	9210103	LC121803	Kit 10
LC122096-K8	25580/25520	14125A/14276	LC122088	9210103	LC121803	Kit 8
LC134543	25580/25520	14125A/14276	LC122088	9210103	LC175704	—
LC148627	25580/25520	02475/02420	ABSEL800	9210103	LC175704	—
008-219-09	25580/25520	14125A/14276	ABSEL800	K71-038	D7-262	—
008-385-81	Cartridge	031-071-03	No Seal	021-086-00	9/16	—
QAK70EB65	25580/25520	14125A/14276	LC122088	9210103	1/2	Kit 8

Axle Components

# Axle Components

## Disc, Rotors Kodiak



**A:** Hub Pattern **B:** Model **C:** Rotor Dia. **D:** Capacity **E:** Inner **F:** Outer **G:** Seal **H:** Lube

Item Number	Description	Extra Info	SO	Color	A	B	C	D	E	F	G	H
<b>ROTOR/HUB-10</b>	Hub/Rotor Integral	Kodiak		Black	545	225	10in	3.5K	L68149	L44649	1.719in	Grease
<b>ROTOR/HUB-12</b>	Rotor Integral	Kodiak		Black	655	255	12in	6K	25580	15123	2.25in	Grease
<b>ROTOR/HUB-12-SC</b>	Hub/Rotor	Kodiak		Scad	655	255	12in	6K	25580	15123	2.25in	Grease
<b>ROTOR-10-DAC</b>	Rotor	Kodiak		Dac	545	225	10in	3.5K	N/A	N/A	N/A	N/A
<b>ROTOR-12-DAC</b>	Rotor	Kodiak		Dac	655	255	12in	6K	N/A	N/A	N/A	N/A
<b>ROTOR12-EC</b>	Rotor	Kodiak		Black	655	225	12in	6K	N/A	N/A	N/A	N/A
<b>ROTOR133</b>	Rotor Replacement Only-1/2in Stud	Kodiak		Black	865	250	12in	7K	N/A	N/A	N/A	N/A

**545**= 5 on 4-1/2 **550**= 5 on 5 **655**= 6 on 5-1/2 **660**= 6 on 6 Ag **5475**= 5 on 4-3/4 **555**= 5 on 5-1/2 **865**= 8 on 6-1/2 **888**= 8 on 8 Ag

## Tie Down



**A:** Hub Pattern **B:** Model **C:** Rotor Dia. **D:** Capacity **E:** Inner **F:** Outer **G:** Seal **H:** Lube

Item Number	Description	Extra Info	SO	Color	A	B	C	D	E	F	G	H
<b>TD46845P</b>	Hub/Rotor	Tie Down		Black	545	Eliminator	9.6in	3.75K	L68149	L44649	1.719in	Grease
<b>TD46845PA</b>	Hub/Rotor Assembly	Tie Down		E-Coat	545	Eliminator	9.6in	3.75K	L68149	L44649	1.719in	Grease
<b>TD46845X</b>	Hub/Rotor	Tie Down		GalvX	545	Eliminator	9.6in	3.75K	L68149	L44649	1.719in	Grease
<b>TD46845XA</b>	Hub/Rotor Assembly	Tie Down		GalvX	545	Eliminator	9.6in	3.75K	L68149	L44649	1.719in	Grease
<b>TD46895P</b>	Hub/Rotor	Tie Down		E-Coat	655	Eliminator	12in	6K	25580	15123	2.25in	Grease
<b>TD46895TLP</b>	Hub/Rotor	Tie Down		E-Coat	655	Turbo Lube	12in	6K	25580	15123	2.25in	Oil
<b>TD46895X</b>	Hub/Rotor	Tie Down		GalvX	655	Eliminator	12in	6K	25580	15123	2.25in	Grease
<b>TD46903X</b>	Hub/Rotor	Tie Down		GalvX	545	Eliminator	8.15in	3.75K	L68149	L44649	1.719in	Grease
<b>TD46911XA</b>	Rotor SS w/GalvX Hub Assy	Tie Down		GalvX	545	G5	9.6in	3.75K	L68149	L44649	1.719in	Grease
<b>TD46912XA</b>	Rotor SS w/GalvX Hub3 Assy	Tie Down		GalvX	655	G5	12in	6K	L25580	L15123	2.25in	Grease

**545**= 5 on 4-1/2 **550**= 5 on 5 **655**= 6 on 5-1/2 **660**= 6 on 6 Ag **5475**= 5 on 4-3/4 **555**= 5 on 5-1/2 **865**= 8 on 6-1/2 **888**= 8 on 8 Ag

Axle Components

# Axle Components

## Disc, Rotors UFP



P33662  
P41019



P35705-1



P36239



P36263



P41035  
P41038  
P41071

**A:** Hub Pattern **B:** Model **C:** Rotor Dia. **D:** Capacity **E:** Inner **F:** Outer **G:** Seal **H:** Lube

Item Number	Description	Extra Info	SO	Color	A	B	C	D	E	F	G	H
<b>P33662</b>	Hub/Rotor RHVR1377-2	UFP		---	545	DB42	10.25in	3.75K	L68149	L68149	1.68in ID	Grease
<b>P35705-1</b>	Hub/Rotor CIHR1377	UFP		Raw	545	DB35	9.75in	3.75K	L68149	L44649	1.719in	Grease
<b>P36239</b>	Hub/Rotor	UFP		Scad	655	DB42	11.50in	6K	25580	15123	2.25in	Grease
<b>P36263</b>	Hub/Rotor HVR1750	UFP	Yes	---	865	DB35	11.75in	7K	25580	14125A	2.25in	Grease
<b>P41019</b>	Hub/Rotor CIHR1377	UFP		Zinc	545	DB35	9.75in	3.75K	L68149	L44649	1.68in ID	Grease
<b>P41035</b>	Hub/Rotor	UFP		Scad	545	DB42	10.25in	3.75K	L68149	L44649	1.68in ID	Grease
<b>P41038</b>	Hub/Rotor CIHR1377	UFP		Raw	545	DB42	10.25in	3.75K	L68149	L44649	1.68in ID	Grease
<b>P41071</b>	Hub/Rotor CIHR1377	UFP		Raw	545	DB35	9.75in	3.75K	L68149	L44649	1.68in ID	Grease

**545**= 5 on 4-1/2 **550**= 5 on 5 **655**= 6 on 5-1/2 **660**= 6 on 6 Ag **5475**= 5 on 4-3/4 **555**= 5 on 5-1/2 **865**= 8 on 6-1/2 **888**= 8 on 8 Ag

# Axle Components

## Torsion Arm Assembly



A: Hub Pattern B: Lube Type C: Rotor Dia. D: Side E: Brake Type F: Bearing Protector Type  
 TB = Trailer Buddy Vlt = Vault SS = Stainless steel Grs = grease

Item Number	Description	Extra Info	SO	A	B	C	D	E	F
P33031L	Torsion Arm Spindle 5.2-6K	UFP		N/A	N/A	N/A	Left	N/A	N/A
P33031R	Torsion Arm Spindle 5.2-6K	UFP		N/A	N/A	N/A	Right	N/A	N/A
P33227L	Torsion Spindle 5.2-6K	UFP		N/A	N/A	N/A	Left	N/A	N/A
P33227R	Torsion Spindle 5.2-6K	UFP		N/A	N/A	N/A	Right	N/A	N/A
P36090	Torsion Arm Spindle 3.5k	UFP		N/A	N/A	N/A	N/A	N/A	N/A
P36233	Torsion Arm Spindle 3.5k	UFP		N/A	N/A	N/A	N/A	N/A	N/A
P36272L	EUTA-37V	UFP	645	Oil	9.75in	Left	Disc	TB/Vlt/SS	
P36272R	EUTA-37V	UFP	545	Oil	9.75in	Right	Disc	TB/Vlt/SS	
P41080	EUTA-37F	UFP	545	Grs	N/A	Either	Idler	TB/SS	
P41107	EUTA-52	UFP	655	Grs	11.50in	Either	Disc	TB/SS	
P41119L	EUTA-60V	UFP	865	Grs	11.50in	Left	Disc	TB/SS	
P41119R	EUTA-60V	UFP	865	Grs	11.50in	Right	Disc	TB/SS	
P41124L	EUTA-52V	UFP	655	Grs	11.50in	Left	Disc	TB/SS	
P41124R	EUTA-52V	UFP	655	Grs	11.50in	Right	Disc	TB/SS	
P41141L	EUTA-42V	UFP	545	Grs	10.25in	Left	Disc	TB/SS	
P41141R	EUTA-42V	UFP	545	Grs	10.25in	Right	Disc	TB/SS	
P41150L & R	EUTA-60F/DB	UFP	865	Grs	N/A	Either	Idler	TB/SS	
P42021	EUTA-42F	UFP	545	Grs	N/A	Either	Idler	TB/SS	
P43014	EUTAv-37F	UFP	545	Oil	N/A	Either	Idler	Vlt/SS	
P43063L	EUTAv-37V	UFP	545	Oil	9.75in	Left	Disc	Vlt/SS	
P43063R	EUTAv-37V	UFP	545	Oil	9.75in	Right	Disc	Vlt/SS	
TD80043A	Torsion Assy Spindle 1750lb S/L	Tie Down		N/A	N/A	N/A	N/A	N/A	N/A
TD80047	Torsion Axle Spindle 1350lb	Tie Down		N/A	N/A	N/A	N/A	N/A	N/A
TD80062W	Eliminator Spindle	Tie Down		N/A	N/A	N/A	N/A	N/A	N/A

545= 5 on 4-1/2 550= 5 on 5 655= 6 on 5-1/2 660= 6 on 6 Ag 5475= 5 on 4-3/4 555= 5 on 5-1/2 865= 8 on 6-1/2 888= 8 on 8 Ag

### Trailer Buddy Torsion Axle Suspension



Trailer buddy torsion axles aren't your average torsion axle. The advancement of these axles over "standard" torsion axles is significant. Trailer Buddy torsion axles come standard with removable trailing arms. This means that replacing the spindle can be accomplished without torching off the axle and causing potential frame damage. If you ever were to damage a spindle or blow out your hub bearings, you won't have to replace the entire axle, only the "end unit" or trailing arm. This arm attaches to the main axle beam by a tooth and groove or spline system. Because of this, the trailing arms can be adjusted for up to 6 degrees for incremental ride height adjustments. The main axle beam integrates into your trailers frame for added structural integrity.

#### Other exclusive features for these axles:

- The combination of inner and outer alignment bushings holds superior wheel camber and toe-in.
- The Rubber Elements provide independent wheel suspension resulting in a smoother ride.
- Rubber is self-dampening which minimizes the trailer hop often experienced with leaf springs.
- Elimination of metal to metal contact means a quieter ride and no maintenance of spring linkages.

Axle Components

# Axle Components

## Bearings

A: Inner Dim. B: Race Number C: Mfg.



031-071-03    031-073-03    031-072-03



14125A



25577



P07032



P07036



LM12649

Item Number	Description	SO	A	B	C
<b>02475</b>	Bearing		1.250in	02420	Tuff-Tow
<b>031-071-03</b>	Bearing w/Cartridge		50mm	----	Dexter
<b>031-073-03</b>	Bearing w/Cartridge		42mm	----	Dexter
<b>14125A</b>	Bearing		1.250in	14276	Tuff-Tow
<b>15123</b>	Bearing		1.250in	15245	Tuff-Tow
<b>25577</b>	Bearing		1.688in	25520	Tuff-Tow
<b>25580</b>	Bearing		1.750in	25520	Tuff-Tow
<b>387A</b>	Bearing		2.25in	----	Tuff-Tow
<b>395</b>	Bearing 10K HD Inner Cone		2.265in	394	Tuff-Tow
<b>395S</b>	Bearing		2.265in	394A	Tuff-Tow
<b>67048</b>	Bearing		1.250in	67010	Tuff-Tow
<b>JL69349</b>	Bearing		1.4961in	JL69310	Tuff-Tow
<b>JLM506849</b>	Bearing		2.1654in	JLM506810	Tuff-Tow
<b>L44643</b>	Bearing		1in	L44610	Tuff-Tow
<b>L44649</b>	Bearing		1.062in	L44610	Tuff-Tow
<b>L68149</b>	Bearing		1.377in	----	Tuff-Tow
<b>LM11949</b>	Bearing		.750in	LM11910	Tuff-Tow
<b>LM12649</b>	Bearing		.843in	LM12610	Tuff-Tow
<b>LM12749</b>	Bearing		.865in	LM12711	Tuff-Tow
<b>LM48548</b>	Bearing		1.375in	LM48510	Tuff-Tow
<b>LM501349</b>	Bearing		1.625in	LM501310	Tuff-Tow
<b>P07032</b>	Oil TB Gold 1 QT		----	----	UFP
<b>P07036</b>	Oil Hybrid Cartridge TB 14oz		----	----	UFP

# Axle Components



## Races

**A:** Outer Dim.   **B:** Bearing Number   **C:** Mfg.

Item Number	Description	SO	A	B	C
<b>02420</b>	Race		2.6875in	02475	Tuff-Tow
<b>14276</b>	Race		2.717in	14125A	Tuff-Tow
<b>15245</b>	Race		2.4409in	15123	Tuff-Tow
<b>25520</b>	Race		3.265in	25580	Tuff-Tow
<b>382A</b>	Race		3.8125in	387A	Tuff-Tow
<b>67010</b>	Race		2.328in	67048	Tuff-Tow
<b>68110</b>	Race		2.328in	L68149	Tuff-Tow
<b>68111</b>	Race		2.361in	L68149	Tuff-Tow
<b>JL69310</b>	Race		2.4803in	JL69349	Tuff-Tow
<b>JLM506810</b>	Race		3.5433in	JLM506849	Tuff-Tow
<b>L44610</b>	Race		1.98in	L44643/L44649	Tuff-Tow
<b>LM11910</b>	Race		1.781in	LM11949	Tuff-Tow
<b>LM12610</b>	Race		1.9687in	LM12649	Tuff-Tow
<b>LM12710</b>	Race		1.781in	LM12749	Tuff-Tow
<b>LM12711</b>	Race		1.81in	LM12749	Tuff-Tow
<b>LM29710</b>	Race		----	29749	Tuff-Tow
<b>LM29749</b>	Race		----	----	Tuff-Tow
<b>LM48510</b>	Race		2.5625in	LM48548	Tuff-Tow
<b>LM501310</b>	Race		2.891in	LM501349	Tuff-Tow
<b>P32351</b>	Race		----	L68149	UPF

# Axle Components

## Bearing Kits



**TTKIT1 - TTKIT10**  
Bearings, Seal, Cap  
& Nuts



**KIT1- KIT13**  
Bearings, Seal, Cap  
& Nuts

**A:** Hub & Drum Size **B:** Weight Capacity **C:** Inner Bearing ID **D:** Outer Bearing ID **E:** Seal ID **F:** MFG  
 .0625 = 1/16" .125 = 1/8" .25 = 1/4" .375 = 3/8" .50 = 1/2" .75 = 3/4"

Item Number	Description	SO	A	B	C	D	E	F
<b>KIT1</b>	Bearing Kit L44649 x2		7in	2000lbs	1.0625	1.0625	1.5	Tuff-Tow
<b>KIT10</b>	Bearing Kit 1412A / 25580		12in	7000lbs	1.75	1.25	2.125	Tuff-Tow
<b>KIT11</b>	Bearing Kit L44649 x2 Special		7in	2000lbs	1.0625	1.0625	1.25	Tuff-Tow
<b>KIT12</b>	Bearing Kit 02475 / 090643		12X3.25in	8000lbs	1.75	1.25	2.25	Tuff-Tow
<b>KIT13</b>	Bearing Kit 02475 / 25580		12X3.25in	8000lbs	1.75	1.25	2.25	Tuff-Tow
<b>KIT14</b>	Bearing Kit 02475 / 25580		12.25x3.375in	8000lbs	1.75	1.25	2.25	Tuff-Tow
<b>KIT1S</b>	Bearing Kit L44649 x2 Std Cap		7in	2000lbs	1.0625	1.0625	1.5	Tuff-Tow
<b>KIT2</b>	Bearing Kit L44643 x2		7in	1800lbs	1	1	1.25	Tuff-Tow
<b>KIT3</b>	Bearing Kits L44649 / L68149		10in	3500lbs	1.375	1.0625	1.71	Tuff-Tow
<b>KIT3S</b>	Bearing Kit 3.5k Axle Std Cap		10in	3500lbs	1.375	1.0625	1.71	Tuff-Tow
<b>KIT4</b>	Bearing Kit L68149 / LM12749		10in	3500lbs	1.375	.865	1.71	Tuff-Tow
<b>KIT5</b>	Bearing Kit 25580 / 67048		12in	5200lbs	1.75	1.25	2.25	Tuff-Tow
<b>KIT6</b>	Bearing Kit 15123 / 25580		12in	5200lbs	1.75	1.25	2.25	Tuff-Tow
<b>KIT660</b>	Bearing Kit AG 6 on 6		AG	3560lbs	1.496	1.25	1.625	Tuff-Tow
<b>KIT6S</b>	Bearing Kit 15123 / 25580 Std		12in	5200lbs	1.75	1.25	2.25	Tuff-Tow
<b>KIT7</b>	Bearing Kit 67048/LM501349		12in	5200lbs	1.625	1.25	2.03	Tuff-Tow
<b>KIT8</b>	Bearing Kit 14125A / 25580		12in	6000lbs	1.75	1.25	2.25	Tuff-Tow
<b>KIT880</b>	Bearing Kit AG 8 on 8	Yes	AG	6000lbs	2.1654	1.625	2.75	Tuff-Tow
<b>KIT8S</b>	Bearing Kit 14125A / 25580 Std		12in	6000lbs	1.75	1.25	2.5	Tuff-Tow
<b>KIT9</b>	Bearing Kit 15123 / 25580		12in	6000lbs	1.75	1.25	2.125	Tuff-Tow
<b>KIT99</b>	Bearing Kit 25580 / K568125		12in	9000lbs	1.99	1.75	2.75	Tuff-Tow
<b>TTKIT1</b>	Bearing Kit L44649 x2		7in	2000lbs	1.062	1.062	1.5	Tuff-Tow
<b>TTKIT10</b>	Bearing Kit 14125A / 25580		12in	7000lbs	1.75	1.25	2.125	Tuff-Tow
<b>TTKIT2</b>	Bearing Kit L44643 x2		7in	1800lbs	1	1	1.25	Tuff-Tow
<b>TTKIT3</b>	Bearing Kit L44649 / L68149		10in	3500lbs	1.375	1.062	1.71	Tuff-Tow
<b>TTKIT6</b>	Bearing Kit 15123 / 25580		12in	5200lbs	1.75	1.25	2.25	Tuff-Tow
<b>TTKIT8</b>	Bearing Kit 14125A / 25580		12in	6000lbs	1.75	1.25	2.25	Tuff-Tow
<b>TTKIT9</b>	Bearing Kit 15123 / 25580		12in	6000lbs	1.75	1.25	2.125	Tuff-Tow

*See Following Pages for Parts Breakdown.*



# Axle Components

## Bearing Kits Bearing Kit Parts List

Item Number	Bearing	Qty	Bearing	Qty	Seal	Qty	Cap	Qty	Plug	Qty	Cotter pin	Qty	Lug Nut	Qty
TKIT1	L44649	1	L44649	1	LC1395614	1	9210101	1	LC122065	1	LC122075	1	LC122076	5
TKIT10	14125A	1	25580	1	AB21334	1	605	1	--	1	LC122075	1	LC122076	8
TKIT11	L44649	1	L44649	1	AB12192	1	092102	1	--	1	LC122075	1	LC122076	5
TKIT12	02475	1	25580	1	ABSEU300	1	K363587	1	--	1	LC122075	1	090643	8
TKIT13	02475	1	25580	1	ABSEU300	1	K363587	1	--	1	LC122075	1	LC134581	8
TKIT15	L44649	1	L44649	1	LC139514	1	092102	1	--	1	LC122075	1	LC122076	5
TKIT2	L44643	1	L44643	1	AB12192	1	092102	1	--	1	LC122075	1	LC122076	5
TKIT3	L44649	1	L69149	1	LC122087	1	9210101	1	LC122065	1	LC122075	1	LC122076	6
TKIT3S	L44649	1	L44649	1	LC122087	1	092102	1	--	1	LC122075	1	LC122076	6
TKIT4	LM12749	1	L69149	1	AB17235	1	523046	1	--	1	LC122075	1	LC122076	5
KIT5	67048	1	25580	1	LC122088	1	35150	1	--	1	LC122075	1	LC122076	6
KIT6	15123	1	25580	1	LC122088	1	9210102	1	LC122065	1	LC122075	1	LC122076	6
KIT660	67048/67010	1	JL69349/JL69310	1	ABSE16225643TC	1	1604	1	--	1	--	--	LB-509	6
KIT6S	15123	1	25580	1	LC122088	1	35150	1	--	1	LC122075	1	LC122076	6
KIT7	67048	1	LM501349	1	AB203285	1	523135	1	--	1	LC122075	1	LC122076	6
KIT8	14125A	1	25580	1	LC122088	1	9210103	1	LC122065	1	LC122075	1	LC122076	8
KIT880	JLMS06849/JLMS06810	1	LM501349/LM501310	1	ABSE27537525TC	1	1609	1	--	1	--	1	--	--
KIT8S	14125A	1	25580	1	LC122088	1	605	1	--	1	LC122075	1	LC122076	8
KIT9	15123	1	25580	1	AB21334	1	35150	1	--	1	LC122075	1	LC122076	6
KIT99	25580	1	28580	1	ABSEU400	1	K568220	1	--	1	LC122075	1	090633	8
TKIT1	L44649	1	L44649	1	LC139514	1	9210101	1	LC122065	1	LC122075	1	LC122076	5
TKIT10	14125A	1	25580	1	AB21334	1	605	1	--	1	LC122075	1	LC122076	8
TKIT12	L44643	1	L44643	1	AB12192	1	092102	1	--	1	LC122075	1	LC122076	5
TKIT13	L44649	1	L69149	1	LC122087	1	9210101	1	LC122065	1	LC122075	1	LC122076	6
TKIT16	15123	1	25580	1	LC122088	1	9210102	1	LC122065	1	LC122075	1	LC122076	6
TKIT18	14125A	1	25580	1	LC122088	1	9210103	1	LC122065	1	LC122075	1	LC122076	8
TKIT19	15123	1	25580	1	AB21334	1	35150	1	--	1	LC122075	1	LC122076	6



# Axle Components

## Bearing Sets



L30207



L30304



P07001 - P07010  
Inner & Outer Bearings  
and Race

### Bearing and Race

**A:** Hub & Drum Size **B:** Weight Capacity **C:** Inner Bearing Dimension **D:** Outer Race Dimension **E:**MFG

Item Number	Description	A	B	C	D	E
K363180	Bearing Set L44649/L44610	7in	2100lbs	1.062	1.98	Al-Ko
K363192	Bearing Set 68149 / 681111	10in	3500lbs	1.377	2.328	Al-Ko
K363196	Bearing Set 25580 / 25520	12in	7008lbs	1.75	3.265	Al-Ko
K363397	Bearing Set 14125A / 14276	12in	7000lbs	1.25	2.717	Al-Ko
K363420	Bearing Set 15123 / 15245	12in	6000lbs	1.25	2.4409	Al-Ko
K568125	Bearing Set 28580 / 28521	12in	8000lbs	1.99	----	Al-Ko
K568218	Bearing Set JM205149 / JM205110	12-1/4in	1200lbs	1.9685	3.5433	Al-Ko
K568219	Bearing Set JM511946 / JM511910	12-1/4in	1200lbs	2.5591	4.3307	Al-Ko
L30207	Bearing Set w/Race Metric	----	----	35mm	72mm	Tuff-Tow
L30304	Bearing Set w/Race Metric	----	----	20mm	52mm	Tuff-Tow
P07001	Bearing Set	----	----	.75	----	UFP
P07002	Bearing Set	----	----	1	----	UFP
P07003	Bearing Set	----	----	1.0625	----	UFP
P07004	Bearing Set	----	----	1.25	----	UFP
P07005	Bearing Set	----	----	.75 & 1.0625	----	UFP
P07006	Bearing Set	----	----	.75 & 1.25	----	UFP
P07007	Bearing Set	----	----	----	----	UFP
P07008	Bearing Set	----	----	1.0625 & 1.375	----	UFP
P07009	Bearing Set	----	----	1.25 & 1.75	----	UFP
P07010	Bearing Set	----	----	1.25 & 1.75	----	UFP
TTBK1	Bearing Set L44649 / L44610	7in	2000lbs	1.062	1.98	Tuff-Tow
TTBK2	Bearing Set L44643 / L44610	7in	1800lbs	1	1.98	Tuff-Tow
TTBK3	Bearing Set L68149 / 68111	10in	3500lbs	1.377	2.361	Tuff-Tow
TTBK5	Bearing Set 67048 / 67010	12in	5200lbs	1.25	2.328	Tuff-Tow
TTBK6	Bearing Set 15123 / 15245	12in	6000lbs	1.25	2.44	Tuff-Tow
TTBK7	Bearing Set 14125A / 14276	12in	7000lbs	1.25	2.717	Tuff-Tow
TTBK8	Bearing Set 25580 / 25520	12in	7000lbs	1.75	3.265	Tuff-Tow

Axle Components



Notes:

# Axle Components



## Bulk Seals

**A: ID B: OD C: Wide D: Double or Single Lip E: Capacity F: Mfg.**

Item Number	Description	Extra Info	SO	A	B	C	D	E	F
010-036-00	Seal Oil	----	Yes	2.250in	3.376in	.38in	----	----	Dexter
010-041-00	Bulk Seals	----	Yes	1.938in	2.523in	.37in	----	----	Dexter
010-056-00	Bulk Seals	----	Yes	3.125in	4.506	.605in	Unitized	----	Hadco
523014	Bulk Seals	120 Series		4.50in	2.80in	4.92in	DL/OIL	10-12K	Hadco
523165	Bulk Seals	----	Yes	----	----	7mm	----	----	Hadco
523601	Bulk Seals	3151 bt		1.40in	1.98in	.49in	DL	2K	Hadco
568350	Bulk Seals	----	Yes	2.125in	3.37in	.38in	DL/OIL	5-7K	Al-Ko
AB11174	Bulk Seals	----		1.120in	1.780in	.40in	SL	2K	Tuff-Tow
AB12192	Bulk Seals	----		1.250in	1.980in	.25in	DL	2K	Tuff-Tow
AB13194	Bulk Seals	----		1.370in	1.980in	.46in	DL	2K	Tuff-Tow
AB15233	Bulk Seals	----		1.50in	2.328in	.313in	SL	3.5K	Tuff-Tow
AB16235	Bulk Seals	----		1.680in	2.330in	.53in	DL	3.5K	Tuff-Tow
AB16255	Bulk Seals	----		1.684in	2.562in	.50in	DL	3.5K	Tuff-Tow
AB17233	Bulk Seals	----		1.72in	2.320in	.31in	DL	3.5K	Tuff-Tow
AB17235	Bulk Seals	----		1.750in	2.350in	.50in	DL	3.5K	Tuff-Tow
AB20325	Bulk Seals	5M/3063/523127		2.000in	3.260in	.62in	DL	5K	Tuff-Tow
AB203285	Bulk Seals	5R/3149/523603		2.030in	2.880in	.56in	DL	5K	Tuff-Tow
AB21325	Bulk Seals	326213SP2-1		2.125in	3.260in	.50in	DL	5.2K	Tuff-Tow
AB21334	Bulk Seals	10-1/10-10/10-19/T K5605		2.125in	3.375in	.37in	DL	5.2-7K	Tuff-Tow
ABSE16225643TC	Bulk Seals	----		1.625in	2.567in	.438in	SL	3.5K	Tuff-Tow
ABSE16826259	Bulk Seals	----		1.68in	2.62in	.59in	DL	3.5K	Tuff-Tow
ABSE17125631	Bulk Seals	----		1.720in	2.560in	.31in	DL	3.5K	Tuff-Tow
ABSE17525631	Bulk Seals	----		1.75in	2.56in	.31in	DL	3.5K	Tuff-Tow
ABSE17527531	Bulk Seals	----		1.75in	2.75in	.31in	DL	3.5K	Tuff-Tow
ABSE18730031	Bulk Seals	----		1.870in	3.00in	.31in	DL	5.2K	Tuff-Tow
ABSE19325028	Bulk Seals	----		1.93in	2.50in	.28in	DL	3.5K-6K	Tuff-Tow
ABSE23733737	Bulk Seals	3231/523010/3382 38SP2-1		2.37in	3.37in	.37in	DL	5.2-8.5K	Tuff-Tow
ABSE23736243	Bulk Seals	99 Prior		2.37in	3.62in	.43in	DL	10K	Tuff-Tow
ABSE25038747	Bulk Seals	523250		2.50in	3.87in	.47in	DL	----	Tuff-Tow
ABSE27537525TC	Bulk Seals	----		2.75in	3.756in	.25in	SL	----	Tuff-Tow
ABSE31527TC	Bulk Seals	----		31mm	52mm	7mm	DL	----	Tuff-Tow
ABSE45X72X15	Bulk Seals	----		45mm	72mm	15mm	DL	----	Tuff-Tow
ABSE50728TC	Bulk Seals	----		1.968in	2.834in	.315in	DL	----	Tuff-Tow
ABSEU100	Bulk Seals	10-56/091023		3.130in	4.510in	.47in	OIL	10K-12K	Tuff-Tow
ABSEU200	Bulk Seals	370025/10-55/0910 3320/46304		4.625in	6.006in	1.00in	OIL	22K-25K	Tuff-Tow
ABSEU300	Bulk Seals	370219BG/10-63/0 9103309/22532		2.250in	3.380in	.42in	OIL	8K-9K	Tuff-Tow
ABSEU400	Bulk Seals	09103001/27438		2.750in	3.770in	.76in	OIL	9K-10K	Tuff-Tow
ABSEU600	Bulk Seals	10-51/B370352BG		2.880in	3.880in	.43in	OIL	10K	Tuff-Tow
LC122087	Bulk Seals	AB17255		1.720in	2.560in	.50in	DL	3.5K	Lippert
LC122088	Bulk Seals	AB22333		2.250in	3.370in	.37in	DL	5.2K-7K	Lippert
LC139514	Bulk Seals	----		1.50in	1.980in	.25in	DL	3.5K	Lippert
P07027	Bulk Seals	Pair		1.68in	2.33in	.53in	----	----	UFP
P07028	Bulk Seals	Pair		1.68in	2.56in	.50in	----	----	UFP
P07029	Bulk Seals	Pair		2.13in	3.26in	.49in	----	----	UFP
P07040	Bulk Seals	----		2.13in	3.38in	.50in	----	----	UFP
P23125	Bulk Seals	----		2.13in	3.38in	----	----	----	UFP

# Axle Components



## Bulk Seals

Item Number	Description	Extra Info	SO	A	B	C	D	E	F
<b>P23274</b>	Bulk Seals	----		2.11in	3.26in	----	----	----	UFP
<b>P32123</b>	Bulk Seals	----		1.68in	2.56in	.50	----	----	UFP
<b>P32125</b>	Bulk Seals	----		2.11in	3.38in	.47in	----	----	UFP
<b>P32372</b>	Bulk Seals	----		1.68in	2.33in	----	----	----	UFP
<b>P32373</b>	Bulk Seals	----		1.68in	2.56in	----	----	----	UFP
<b>P32374</b>	Bulk Seals	----		2.13in	3.26in	----	----	----	UFP
<b>TD11086</b>	Bulk Seals	----		2.250in	3.370in	.37in	TL	5.2K-7K	Tie Down
<b>TD11088</b>	Bulk Seals	----		1.719in	2.565in	.37in	TL	1.75K	Tie Down

## Packaged Seals

**A:** ID   **B:** OD   **C:** Wide   **D:** Double or Single Lip  
**E:** Spindle Type   **F:** Mfg.



Item Number	Description	Extra Info	A	B	C	D	E	F
<b>K363275</b>	Packaged Seals	AB12192	1.25in	1.98in	.25in	DL	BT	Al-Ko
<b>K363276</b>	Packaged Seals	AB17255	1.75in	2.56in	.5in	DL	UHI 3.5K	Al-Ko
<b>K363497</b>	Packaged Seals	AB22333	2.25in	3.37in	.37in	DL	HRM	Al-Ko
<b>K568145</b>	Packaged Seals	AB15192	1.50in	1.98in	.25in	DL	BTR	Al-Ko
<b>K568209</b>	Packaged Seals	AB21334	3.37in	2.125in	.37in	DL	HRM	Al-Ko
<b>K568217</b>	Packaged Seals		3.130in	4.510in	.73in	OIL/GR	120/160	Al-Ko
<b>K568303</b>	Packaged Seals	ABSEU300	2.75in	3.78in	.73in	OIL/GR	99	Al-Ko

# Axle Components

## Seal Kits

**A:** ID **B:** OD **C:** Wide **D:** Double or Single Lip **E:** Capacity **F:** MFG **G:** Type

Item Number	Description	Extra Info	SO	A	B	C	D	E	F	G
1	Spindle Seal Kit	----		1.37	1.98	.48	SL	2K	BBuddy	Pair
10	Spindle Seal Kit	----		1.783	2.36	.56	SL	3.5K	BBuddy	Pair
11	Spindle Seal Kit	----		2.345	3.37	.44	DL	5.2K-7K	BBuddy	Pair
2	Spindle Seal Kit	----		1.83	2.56	.59	SL	3.5K	BBuddy	Pair
K71-301-00	Seal Grease	----	Yes	1.50	1.987	----	----	----	Dexter	Pair
K71-303-00	Spindle Seal Kit	AB17255		1.71	2.56	.50	DL	3.5K	Dexter	Pair
K71-304-00	Spindle Seal Kit	AB21334		2.125	3.37	.468	DL	5.2K-7K	Dexter	Pair
K71-305-00	Spindle Seal Kit	----		2.25	3.37	.468	DL	5.2K-7K	Dexter	Pair
K71-387-00	Spindle Seal Kit	Gen. Duty		2.88	3.88	.43	DL	9K-10K	Dexter	Pair
P05611	Spindle Seal Kit	----		1.37	1.98	0.5	----	----	UFP	Pair
P05613	Spindle Seal Kit	----		1.83	2.56	0.61	----	----	UFP	Pair
P05615	Spindle Seal Kit	----		----	2.56	----	----	----	UFP	Pair
P05617	Spindle Seal Kit	----		----	2.63	----	----	----	UFP	Pair
P05619	Spindle Seal Kit	----		----	1.98	----	----	----	UFP	Pair
P05623	Spindle Seal Kit	----		----	2.33	----	----	----	UFP	Pair
P05625	Spindle Seal Kit	----		----	2.33	----	----	----	UFP	Pair
P05627	Spindle Seal Kit	----		----	2.5	----	----	----	UFP	Pair
P05629	Spindle Seal Kit	----		1.83	2.36	0.565	----	----	UFP	Pair
P05631	Spindle Seal Kit	----		2.345	3.38	0.61	----	----	UFP	Pair
TTSK1	Spindle Seal Kit	----		1.25	1.98	.25	DL	2K	Tuff-Tow	Pair
TTSK2	Spindle Seal Kit	----		1.50	1.98	.25	DL	2K	Tuff-Tow	Pair
TTSK3	Spindle Seal Kit	----		1.72	2.56	.50	DL	3.5K	Tuff-Tow	Pair
TTSK4	Spindle Seal Kit	----		2.125	3.375	.33	DL	5.2-7K	Tuff-Tow	Pair
TTSK5	Spindle Seal Kit	----		2.25	3.37	.37	DL	5.2K-7K	Tuff-Tow	Pair
TTSK6	Spindle Seal Kit	----		2.25	3.38	.42	DL	5.2K-7K	Tuff-Tow	Pair



TTSK1 - TTSK6



1 - 11



TK5602 - TK6605



K71-301-00 -  
K71-387-00

## Z Rings

**A:** ID **B:** Reference Number **C:** OD **D:** MFG

Item Number	Description	SO	A	B	C	D
516032	Z Rings		1.70	3143	1.77	Hadco
516033	Z Rings		2.00	3146	2.07	Hadco
516034	Z Rings		1.38	3153	1.45	Hadco
P33522	L Ring (1377)		1.608	----	1.68od	UFP
P33523	L Ring (1750)		2.052	----	2.112	UFP
SSR1685	Z Ring SS For SL168 Seal	Yes	----	----	----	Reliable



516032



P33522

Axle Components

# Axle Components

## Standard Caps



A:OD B:MFG

Item Number	Description	Extra Info	SO	A	B
021-039-00	Dust Cap	----		2.72	Dexter
0415900	Dust Cap	----		2.352	Titan
092102	Dust Cap	46749		1.98	Tuff-Tow
35150	Dust Cap	45896		2.441	Tuff-Tow
523045	Dust Cap	3001		1.96875	Hadco
523046	Dust Cap	3121		1.810	Hadco
523089	Dust Cap	313		2.250	Hadco
523134	Dust Cap	120		3.46	Hadco
523135	Dust Cap	----		2.3125	Hadco
523255	Dust Cap	----		2.4375	Hadco
605	Dust Cap	1605		2.72	Tuff-Tow
AG-DC-244	Dust Cap	----		2.446	Cequent
AG-DC-313	Dust Cap	----		3.125	Cequent
K363182	Dust Cap	46749/Pair		1.98	Al-Ko
K363199	Dust Cap	45896/Pair		2.44	Al-Ko
K363419	Dust Cap	1605/ Pair		2.72	Al-Ko
K71-642-00	Dust Cap Nev-R-Lube	Pair		3.339	Dexter
K71-643-00	Dust Cap Nev-R-Lube	Pair		3.104	Dexter
K71-644-00	Dust Cap Nev-R-Lube	Pair		2.76	Dexter
TTDC1	Dust Cap	Pair		1.98	Tuff-Tow
TTDC2	Dust Cap	Pair		2.45	Tuff-Tow
TTDC3	Dust Cap	Pair		2.72	Tuff-Tow

Axle Components

# Axle Components

## Bearing Buddy Caps

A:OD B: MFG

Item Number	Description	Extra Info	SO	A	B
1781V	Bearing Protector Cap w/Bra	Pair		1.781	BBuddy
1781V-B	Bearing Protector Cap w/o Bra	Pair		1.781	BBuddy
17BV	Bearing Protector Bra	Pair		17B	BBuddy
1810	Bearing Protector Cap w/o Bra	Pair		1.81	BBuddy
1938V	Bearing Protector Cap w/Bra	Pair		1.938	BBuddy
1980V	Bearing Protector Cap w/Bra	Pair		1.980	BBuddy
1980V-B	Bearing Protector Cap w/o Bra	Pair		1.980	BBuddy
19BV	Bearing Protector Bra	Pair		19B	BBuddy
2047V	Bearing Protector Cap w/Bra	Pair		2.047	BBuddy
2080V	Bearing Protector Cap w/Bra	Pair		2.080	BBuddy
2328V	Bearing Protector Cap w/Bra	Pair		2.328	BBuddy
23B	Bearing Protector Bra	Each		23B	BBuddy
23BV	Bearing Protector Bra	Pair		23B	BBuddy
2441	Bearing Protector Cap w/Bra	Pair		2.441	BBuddy
2562	Bearing Protector Cap w/Bra	Pair		2.562	BBuddy
2717	Bearing Protector Cap w/o Bra	Pair		2.717	BBuddy
BP178	Bearing Protector Cap w/Bra	Each		1.781	Tuff-Tow
BP198	Bearing Protector Cap w/Bra	Each		1.98	Tuff-Tow
CU22178	Bearing Protector	Pair		1.781	Curt
CU22198	Bearing Protector	Pair		1.980	Curt
CU22232	Bearing Protector Bra	Pair		2.328	Curt
CU22244	Bearing Protector Cap	Pair		2.44	Curt
CU23178	Bearing Protector Bra	Pair		1.78	Curt
CU23198	Bearing Protector Bra	Pair		1.98	Curt
CU23232	Bearing Protector Bra	Pair		2.32	Curt
CU23244	Bearing Protector Bra	Pair		2.44	Curt
CUF-198	Bearing Protector	Pair		1.980	Curt
P05680	Bearing Protector Bra	----		19B	UFP
P05681	Bearing Protector Bra	----		17B	UFP
P05682	Bearing Protector Bra	----		23B	UFP
P05800	Bearing Protector Vault	----		2.328	UFP
P05830	Bearing Protector	----		2.328	UFP
P07241	Bearing Protector Cap	----		1.781	UFP
P07243	Bearing Protector Cap	----		1.781	UFP
P07245	Bearing Protector Cap	----		1.938	UFP
P07247	Bearing Protector Cap	----		1.968	UFP
P07251	Bearing Protector Cap	----		2.047	UFP
P07253	Bearing Protector Cap	----		2.080	UFP
P07255	Bearing Protector Cap	----		2.240	UFP
P07257	Bearing Protector Cap	----		2.328	UFP
P07371	Bearing Protector Cap	----		1.980	UFP
P07500	Bearing Protector Cap	Each		1.980	UFP
P07501	Bearing Protector Cap	----		1.980	UFP
P07502	Bearing Protector Cap Vault	----		1.980	UFP
P07509	Bearing Protector Cap	----		1.980	UFP
P07651	Bearing Protector Cap	----		1.980	UFP
P07656	Bearing Protector Cap	----		2.441	UFP
P07666	Bearing Protector Cap	----		2.562	UFP
P07671	Bearing Protector Cap	----		2.717	UFP



1781V



2441



P05680



1980V



CUF-178



P07671



P07500

Axle Components

# Axle Components

## Bearing Buddy Caps

### Lube Caps



085-001-00  
K71-320-00  
LC122065



9210101  
P34751



9210102  
9210103



K363277



K71-315-00



K71-317-00  
K71-319-00



P32640



P36189



TTDC4



TTDC5



TTDC6

A:OD B:MFG

Item Number	Description	Extra Info	SO	A	B
085-001-00	Lube Cap Plug	Bulk		1.214	Dexter
9210101	Lube Cap	Bulk		1.980	Tuff-Tow
9210102	Lube Cap	Bulk		2.441	Tuff-Tow
9210103	Lube Cap	Bulk		2.72	Tuff-Tow
K363277	Lube Cap	Pair		1.98	Al-Ko
K71-315-00	Lube Cap	Pair		1.980	Dexter
K71-317-00	Lube Cap	Pair		2.45	Dexter
K71-319-00	Lube Cap	Pair		2.72	Dexter
K71-320-00	EZ Lube Plug	Pair		1.214	Dexter
LC122065	Lube Cap Plug	Bulk		1.214	Lippert
P32640	Lube Cap Plug	Bulk		1.31	UFP
P34751	Lube Cap	Bulk		1.980	UFP
P36189	Lube Cap	Bulk		2.382	UFP
TTDC4	Lube Cap	Pair		1.980	Tuff-Tow
TTDC5	Lube Cap	Pair		2.45	Tuff-Tow
TTDC6	Lube Cap	Pair		2.72	Tuff-Tow



# Axle Components

## Oil Caps



**A:OD B: ID C:MFG D:Seal OD E:Seal ID**

Item Number	Description	SO	A	B	C	D	E
010-050-00	Oil Cap O-Ring2		----	N/A	Dexter	N/A	N/A
021-040-00	Oil Cap for AO & UTO Screw-In		2.61	N/A	Dexter	N/A	N/A
092126	Oil Cap Plug		1.08	N/A	Al-Ko	N/A	N/A
10-45	Oil Cap O-Ring		N/A	2.65	Dexter	N/A	N/A
21-35	Oil Cap 8-9K		2.768	N/A	Dexter	N/A	N/A
46-32	Oil Cap Plug		.875	N/A	Dexter	N/A	N/A
46-52	Oil Cap Plug		.55	N/A	Dexter	N/A	N/A
568297	Oil Cap Gasket		N/A	3.54	Al-Ko	N/A	N/A
568298	Oil Cap Gasket		N/A	2.70	Al-Ko	N/A	N/A
K363587	Oil Cap 7-8K After 96		2.84	N/A	Al-Ko	N/A	N/A
K363587.1	Oil Cap 7-8K Prior 97		2.717	N/A	Al-Ko	N/A	N/A
K568220	Oil Cap 9K-16K		3.62	N/A	Al-Ko	N/A	N/A
K71-038	Oil Cap 6K-8/9K		2.767	N/A	Dexter	N/A	N/A
K71-148-00	Oil Cap 10K		3.875	N/A	Dexter	N/A	N/A
P32326	Oil Plug		25/64	N/A	UFP	N/A	N/A
TD48399A	Turbo Lube Cap		2.58	N/A	Tie Down	N/A	N/A
XLPL1980K	Oil Cap Kit		1.980	N/A	Kodiak	2.56	1.71
XLPL2440K	Oil Cap Kit		2.44	N/A	Kodiak	3.37	2.25
XLPL8	Oil Pro Lube 8oz		N/A	N/A	Kodiak	N/A	N/A
XLPLPCAP1980	Oil Cap		1.980	N/A	Kodiak	N/A	N/A
XLPLPCAP2440	Oil Cap		2.44	N/A	Kodiak	N/A	N/A
XLPLSEAL1980	Oil Seal XLP		N/A	N/A	Kodiak	2.56	1.71
XLPLSEAL2440	Oil Seal XLP		N/A	N/A	Kodiak	3.37	2.25
XLPLUG	Oil Cap Plug XLP		.48	N/A	Kodiak	N/A	N/A
XLPRO1980ORING	Pro Lube Cap		1.92	1.50	Kodiak	N/A	N/A
XLPRO2440ORING	Oil Cap O-Ring		N/A	2.22	Kodiak	N/A	N/A

# Axle Components

## Electric Backing Plate Electric Backing Plate 7" x 1-3/4"



**A:** Diameter **B:** Shoe Width **C:** Capacity **D:** Center Hole **E:** Studs Qty **F:** Side **G:** Brake Type **H:** Plate Type  
**FB** = Free Backing **STD** = Standard **PB** = Parking Brake **FSA** = Forward Self Adjusting

Item Number	Description	Extra Info	SO	Color	A	B	C	D	E	F	G	H
<b>K23-047-00</b>	Brake Assembly	Dexter		Painted	7in	1.25in	2K	3in	4	Left	Std	Stamped
<b>K23-048-00</b>	Brake Assembly	Dexter		Painted	7in	1.25in	2K	3in	4	Right	Std	Stamped

## Electric Backing Plate 10" x 1-3/4"



**A:** Diameter **B:** Shoe Width **C:** Capacity **D:** Center Hole **E:** Studs Qty **F:** Side **G:** Brake Type **H:** Plate Type  
**FB** = Free Backing **STD** = Standard **PB** = Parking Brake **FSA** = Forward Self Adjusting

Item Number	Description	Extra Info	A	B	C	D	E	F	G	H
<b>1530116</b>	Brake Assembly	Al-Ko	10in	1.75in	3.5K	3in	4	Right	Adv	Stamped
<b>1530117</b>	Brake Assembly	Al-Ko	10in	1.75in	3.5K	3in	4	Left	Adv	Stamped

Axle Components

# Axle Components

## Electric Backing Plate Electric Backing Plate 10" x 2-1/4"



48972  
48973  
568998  
568999



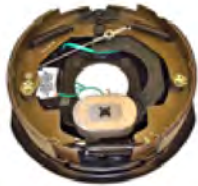
60202903  
60203003



K23-027-00  
K23-027-00



K363383.1  
K363383.2



LC1224503  
LC1222583



TT48972  
TT48973

**A:** Diameter **B:** Shoe Width **C:** Capacity **D:** Center Hole **E:** Studs Qty **F:** Side **G:** Brake Type **H:** Plate Type

**FB** = Free Backing **STD** = Standard **PB** = Parking Brake **FSA** = Forward Self Adjusting

Item Number	Description	Extra Info	SO	Color	A	B	C	D	E	F	G	H
48972	Brake Assembly	Tuff-Tow		Painted	10in	2.25in	3.5K	3in	4	Right	Std	Stamped
48973	Brake Assembly	Tuff-Tow		Painted	10in	2.25in	3.5K	3in	4	Left	Std	Stamped
568998	Brake Assembly	Al-Ko		Black	10in	2.25in	4.4K	3in	4	Right	Std	Stamped
568999	Brake Assembly	Al-Ko		Black	10in	2.25in	4.4K	3in	4	Left	Std	Stamped
60202903	Brake Assembly	Al-Ko		Painted	10in	2.25in	3.5K	3in	4	Right	PB	Stamped
60203003	Brake Assembly	Al-Ko		Painted	10in	2.25in	3.5K	3in	4	Left	PB	Stamped
K23-026-00	Brake Assembly	Dexter		Painted	10in	2.25in	3.5K	3in	4	Left	Std	Stamped
K23-027-00	Brake Assembly	Dexter		Painted	10in	2.25in	3.5K	3in	4	Right	Std	Stamped
K363383.1	Brake Assembly	Al-Ko		Painted	10in	2.25in	3.5K	3in	4	Right	Std	Stamped
K363383.2	Brake Assembly	Al-Ko		Painted	10in	2.25in	3.5K	3in	4	Left	Std	Stamped
LC1222583	Brake Assembly	Lippert		Painted	10in	2.25in	3.5K	3in	4	Left	FSA	Stamped
LC1224503	Brake Assembly	Lippert		Painted	10in	2.25in	3.5K	3in	4	Right	FSA	Stamped
TT48972	Brake Assembly	Tuff-Tow		Black	10in	2.25in	3.5K	3in	4	Right	Std	Stamped
TT48973	Brake Assembly	Tuff-Tow		Black	10in	2.25in	3.5K	3in	4	Left	Std	Stamped

# Axle Components

## Electric Backing Plate Electric Backing Plate 12" x 2"



76717  
76718



K23-106-00  
K23-105-00



K23-181-00  
K23-180-00



K23-458-00  
K23-459-00



K23-464-00  
K23-465-00

K568106.1  
K568106.2



LC1222593  
LC1224513



TT76717  
TT76718

A: Diameter B: Shoe Width C: Capacity D: Center Hole E: Studs Qty F: Side G: Brake Type H: Plate Type

FB = Free Backing STD = Standard PB = Parking Brake FSA = Forward Self Adjusting

Item Number	Description	Extra Info	SO	Color	A	B	C	D	E	F	G	H
76717	Brake Assembly	Tuff-Tow		Painted	12in	2in	5-7K	3.25in	5	Right	Std	Stamped
76718	Brake Assembly	Tuff-Tow		Painted	12in	2in	5-7K	3.25in	5	Left	Std	Stamped
K23-105-00	Brake Assembly	Dexter		Painted	12in	2in	5-6K	3.25in	5	Left	Std	Stamped
K23-106-00	Brake Assembly	Dexter		Painted	12in	2in	5-6K	3.25in	5	Right	Std	Stamped
K23-180-00	Brake Assembly	Dexter		Painted	12in	2in	7K	3.25in	5	Left	Std	Stamped
K23-181-00	Brake Assembly	Dexter		Painted	12in	2in	7K	3.25in	5	Right	Std	Stamped
K23-458-00	Brake Assembly	Dexter		Painted	12in	2in	6K	3.25in	5	Left	FSA	Stamped
K23-459-00	Brake Assembly	Dexter		Painted	12in	2in	6K	3.25in	5	Right	FSA	Stamped
K23-464-00	Brake Assembly	Dexter		Painted	12in	2in	7K	3.25in	5	Left	FSA	Stamped
K23-465-00	Brake Assembly	Dexter		Painted	12in	2in	7K	3.25in	5	Right	FSA	Stamped
K568106.1	Brake Assembly	Al-Ko		Painted	12in	2in	5-6K	3.25in	9	Right	Std	Stamped
K568106.2	Brake Assembly	Al-Ko		Painted	12in	2in	5-6K	3.25in	9	Left	Std	Stamped
LC1222593	Brake Assembly	Lippert		Painted	12in	2in	5-7K	3.25in	5	Left	FSA	Stamped
LC1224513	Brake Assembly	Lippert		Painted	12in	2in	5-7K	3.25in	5	Right	FSA	Stamped
TT76717	Brake Assembly	Tuff-Tow			12in	2in	5-7K	3.25in	5	Right	Std	Stamped
TT76718	Brake Assembly	Tuff-Tow			12in	2in	5-7K	3.25in	5	Left	Std	Stamped

# Axle Components

## Electric Backing Plate Electric Backing Plate 12" x 3-3/8"



60204306

**A:** Diameter **B:** Shoe Width **C:** Capacity **D:** Center Hole **E:** Studs Qty **F:** Side **G:** Brake Type **H:** Plate Type  
**FB** = Free Backing **STD** = Standard **PB** = Parking Brake **FSA** = Forward Self Adjusting

Item Number	Description	Extra Info	Color	A	B	C	D	E	F	G	H
60204306	Brake Assembly	Al-Ko	Painted	12in	3.375	8K	4.50in	4	Right	Std	Stamped
60204406	Brake Assembly	Al-Ko	Painted	12in	3.375	8K	4.50in	4	Left	Std	Stamped

## Electric Backing Plate 12-1/4" x 3-1/2"



K568255.1

**A:** Diameter **B:** Shoe Width **C:** Capacity **D:** Center Hole **E:** Studs Qty **F:** Side **G:** Brake Type **H:** Plate Type  
**FB** = Free Backing **STD** = Standard **PB** = Parking Brake **FSA** = Forward Self Adjusting

Item Number	Description	Extra Info	Color	A	B	C	D	E	F	G	H
K568255.1	Brake Assembly	Al-Ko	Plained	12-1/4in	3-1/2in	9-12K	4.50in	5	Right	FSA	Stamped
K568255.2	Brake Assembly	Al-Ko	Painted	12-1/4in	3-1/2in	9-12K	4.50in	5	Left	FSA	Stamped

## Electric Backing Plate 12-1/4" x 3-3/8"



K23-435-00  
K23-434-00



K23-450-00  
K23-451-00

**A:** Diameter **B:** Shoe Width **C:** Capacity **D:** Center Hole **E:** Studs Qty **F:** Side **G:** Brake Type **H:** Plate Type  
**FB** = Free Backing **STD** = Standard **PB** = Parking Brake **FSA** = Forward Self Adjusting

Item Number	Description	Extra Info	SO	Color	A	B	C	D	E	F	G	H
K23-434-00	Brake Assembly	Dexter		Painted	12-1/4in	3-3/8in	8K	3.875in	4	Left	FSA	Cast
K23-435-00	Brake Assembly	Dexter		Painted	12-1/4in	3-3/8in	8K	3.875in	4	Right	FSA	Cast
K23-450-00	Brake Assembly	Dexter		Painted	12-1/4in	3-3/8in	9-10K	4.50in	7	Left	FSA	Cast
K23-451-00	Brake Assembly	Dexter		Painted	12-1/4in	3-3/8in	9-10K	4.50in	7	Right	FSA	Cast

# Axle Components

## Electric Backing Plate Electric Backing Plate 12-1/4" x 2-1/2"



**A:** Diameter **B:** Shoe Width **C:** Capacity **D:** Center Hole **E:** Studs Qty **F:** Side **G:** Brake Type **H:** Plate Type  
**FB = Free Backing** **STD = Standard** **PB = Parking Brake** **FSA = Forward Self Adjusting**

Item Number	Description	Extra Info	SO	Color	A	B	C	D	E	F	G	H
K23-428-00	Brake Assembly	Dexter		Painted	12-1/4in	2-1/2in	7.2K	3.875in	4	Left	Std	Cast
K23-429-00	Brake Assembly	Dexter		Painted	12-1/4in	2-1/2in	7.2K	3.875in	4	Right	Std	Cast

## Electric Backing Plate 12-1/4" x 4"



**A:** Diameter **B:** Shoe Width **C:** Capacity **D:** Center Hole **E:** Studs Qty **F:** Side **G:** Brake Type **H:** Plate Type  
**FB = Free Backing** **STD = Standard** **PB = Parking Brake** **FSA = Forward Self Adjusting**

Item Number	Description	Extra Info	Color	A	B	C	D	E	F	G	H
K23-438-00	Brake Assembly	Dexter	Painted	12-1/4in	4in	10K	4.375in	7	Left	FSA	Cast
K23-439-00	Brake Assembly	Dexter	Painted	12-1/4in	4in	10K	4.375in	7	Right	FSA	Cast

## Electric Backing Plate 12-1/4" x 5"



**A:** Diameter **B:** Shoe Width **C:** Capacity **D:** Center Hole **E:** Studs Qty **F:** Side **G:** Brake Type **H:** Plate Type  
**FB = Free Backing** **STD = Standard** **PB = Parking Brake** **FSA = Forward Self Adjusting**

Item Number	Description	Extra Info	SO	Color	A	B	C	D	E	F	G	H
K23-446-00	Brake Assembly	Dexter	Yes	Painted	12-1/4in	5in	15K	4.50in	7	Left	FSA	Cast
K23-447-00	Brake Assembly	Dexter	Yes	Painted	12-1/4in	5in	15K	4.50in	7	Right	FSA	Cast

Axle Components

# Axle Components

## Hydraulic, Parking Brake Hydraulic Backing Plate 7" x 1-3/4" & 8.5" x 2.25"



A: Diameter B: Shoe Width C: Capacity D: Center Hole E: Studs Qty F: Plate Type G: Cylinder Type H: Brake Type

FB = Free Backing STD = Standard PB = Parking Brake FSA = Forward Self Adjusting

Item Number	Description	Extra Info	SO	Color	A	B	C	D	E	F	G	H
80733	Brake Assembly RH	Atwood		Painted	7in	1.75in	2K	3in	4	Stamped	Uni	Std
80743	Brake Assembly LH	Atwood		Painted	7in	1.75in	2K	3in	4	Stamped	Uni	Std
K23-398-00	Brake Assembly LH	Dexter		Painted	7in	1.75in	2K	3in	4	Stamped	Uni	Std
K23-399-00	Brake Assembly RH	Dexter		Painted	7in	1.75in	2K	3in	4	Stamped	Uni	Std

## Hydraulic Backing Plate 10" x 2-1/4"



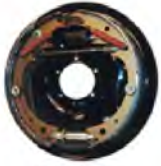
A: Diameter B: Shoe Width C: Capacity D: Center Hole E: Studs Qty F: Plate Type G: Cylinder Type H: Brake Type

FB = Free Backing STD = Standard PB = Parking Brake FSA = Forward Self Adjusting

Item Number	Description	Extra Info	SO	Color	A	B	C	D	E	F	G	H
18787M	Brake Assembly RH	Demco		Galvanized	10in	2.25in	3.5K	3in	4	Stamped	Uni	Std
18788M	Brake Assembly LH	Demco		Galvanized	10in	2.25in	3.5K	3in	4	Stamped	Uni	Std
40715M	Brake Assembly RH	Demco		Galvanized	10in	2.25in	3.5K	3in	4	Stamped	Uni	FB
40716M	Brake Assembly LH	Demco		Galvanized	10in	2.25in	3.5K	3in	4	Stamped	Uni	FB
4423600	Brake Assembly RH	Titan		Galphorite	10in	2.25in	3.5K	3in	4	Stamped	Uni	FB/PB
4423700	Brake Assembly LH	Titan		Galphorite	10in	2.25in	3.5K	3in	4	Stamped	Uni	FB/PB
LC132047	Brake Assembly RH	Lippert		Painted	10in	2.25in	3.5K	3in	4	Stamped	Uni	Std
LC132048	Brake Assembly LH	Lippert		Painted	10in	2.25in	3.5K	3in	4	Stamped	Uni	Std
P32434L	Brake Assembly LH	UFP		Marine	10in	2.25in	3.5K	3in	4	Stamped	Uni	Std
P32434R	Brake Assembly RH	UFP		Marine	10in	2.25in	3.5K	3in	4	Stamped	Uni	Std
P32518L	Brake Assembly LH	UFP		Painted	10in	2.25in	3.5K	3in	4	Stamped	Uni	Std
P32518R	Brake Assembly RH	UFP		Painted	10in	2.25in	3.5K	3in	4	Stamped	Uni	Std
SB1878700	Brake Assembly RH	Titan		E-Coat	10in	2.25in	3.5K	3in	4	Stamped	Uni	Std
SB1878800	Brake Assembly LH	Titan		E-Coat	10in	2.25in	3.5K	3in	4	Stamped	Uni	Std
SB18793	Brake Assembly RH	Demco		Painted	10in	2.25in	3.5K	3in	4	Stamped	Duo	Std
SB18794	Brake Assembly LH	Demco		Painted	10in	2.25in	3.5K	3in	4	Stamped	Duo	Std
SB24428	Brake Assembly RH	Demco		Painted	10in	2.25in	3.5K	3in	4on3.96	Stamped	Uni	FSA
SB24429	Brake Assembly LH	Demco		Painted	10in	2.25in	3.5K	3in	4on3.96	Stamped	Uni	FSA

# Axle Components

## Hydraulic, Parking Brake Hydraulic Backing Plate 12" x 2"



2351200  
2351300



44895  
44896



K23-338-00  
K23-339-00  
LC138754  
LC138755



K23-342-00  
K23-343-01



SB2351000  
SB2351100



SB23510M  
SB23511M



SB42028M  
SB42029M

A: Diameter B: Shoe Width C: Capacity D: Center Hole E: Studs Qty F: Plate Type G: Cylinder Type H: Brake Type  
**FB = Free Backing** **STD = Standard** **PB = Parking Brake** **FSA = Forward Self Adjusting**

Item Number	Description	Extra Info	SO	Color	A	B	C	D	E	F	G	H
2351200	Brake Assembly RH	Titan		Painted	12in	2in	5-6K	3.25in	5	Stamped	Uni	PB
2351300	Brake Assembly LH	Titan		Painted	12in	2in	5-6K	3.25in	5	Stamped	Uni	PB
44895	Brake Assembly RH	Titan		E-Coat	12in	2in	5-6K	3.25in	5	Stamped	Uni	FB
44896	Brake Assembly LH	Titan		E-Coat	12in	2in	5-6K	3.25in	5	Stamped	Uni	FB
K23-338-00	Brake Assembly LH	Dexter		Painted	12in	2in	7K	3.25in	5	Stamped	Uni	Std
K23-339-00	Brake Assembly RH	Dexter		Painted	12in	2in	7K	3.25in	5	Stamped	Uni	Std
K23-342-00	Brake Assembly LH	Dexter		Painted	12in	2in	7K	3.25in	5	Stamped	Uni	FB
K23-342-01	Brake Assembly LH	Dexter		Galvanized	12in	2in	7K	3.25in	5	Stamped	Uni	FB
K23-343-00	Brake Assembly RH	Dexter		Painted	12in	2in	7K	3.25in	5	Stamped	Uni	FB
K23-343-01	Brake Assembly RH	Dexter		Galvanized	12in	2in	7K	3.25in	5	Stamped	Uni	FB
LC138754	Brake Assembly LH	Lippert		Painted	12in	2in	7K	3.25in	5	Stamped	Uni	Std
LC138755	Brake Assembly RH	Lippert		Painted	12in	2in	7K	3.25in	5	Stamped	Uni	Std
SB2351000	Brake Assembly RH	Demco		Painted	12in	2in	5-6K	3.25in	5	Stamped	Uni	Std
SB23510M	Brake Assembly RH	Demco		Galvanized	12in	2in	5-6K	3.25in	5	Stamped	Uni	Std
SB2351100	Brake Assembly LH	Titan		Painted	12in	2in	5-6K	3.25in	5	Stamped	Uni	Std
SB23511M	Brake Assembly LH	Demco		Galvanized	12in	2in	5-6K	3.25in	5	Stamped	Uni	Std
SB42028M	Brake Assembly RH	Demco		Galvanized	12in	2in	5-6K	3.25in	5	Stamped	Uni	FB
SB42029M	Brake Assembly LH	Demco		Galvanized	12in	2in	5-6K	3.25in	5	Stamped	Uni	FB
SB4203100	Brake Assembly LH	Titan		Galvanized	12in	2in	5-6K	3.25in	5	Stamped	Uni	FB/PB

## Hydraulic Backing Plate 12" x 3-1/2"

**ALKO**  
Kober Corporation



60206803

A: Diameter B: Shoe Width C: Capacity D: Center Hole E: Studs Qty F: Plate Type G: Cylinder Type H: Brake Type  
**FB = Free Backing** **STD = Standard** **PB = Parking Brake** **FSA = Forward Self Adjusting**

Item Number	Description	Extra Info	SO	Color	A	B	C	D	E	F	G	H
60206803	Brake Assembly RH/LH	Al-Ko		Painted	12in	3.375in	8K	4.50in	4	Stamped	Duo	Std



# Axle Components

## Hydraulic, Parking Brake Hydraulic Backing Plate 12-1/4" x 3-3/8"



K23-411-00

**A:** Diameter **B:** Shoe Width **C:** Capacity **D:** Center Hole **E:** Studs Qty **F:** Plate Type **G:** Cylinder Type **H:** Brake Type  
**FB** = Free Backing **STD** = Standard **PB** = Parking Brake **FSA** = Forward Self Adjusting

Item Number	Description	Extra Info	SO	Color	A	B	C	D	E	F	G	H
<b>K23-403-00</b>	Brake Assembly RH	Dexter		Painted	12.25in	3.375in	8K	3.90in	4	Cast	Duo	FSA
<b>K23-411-00</b>	Brake Assembly RH	Dexter		Painted	12.25in	3.375in	9-10K	4.50in	7	Cast	Duo	FSA
<b>K23-418-00</b>	Brake Assembly LH	Dexter		Painted	12.25in	3.375in	8K	3.90in	4	Cast	Uni	FSA
<b>K23-419-00</b>	Brake Assembly RH	Dexter		Painted	12.25in	3.375in	8K	3.90in	4	Cast	Uni	FSA

## Hydraulic Backing Plate 12-1/4" x 4"



K23-404-00

**A:** Diameter **B:** Shoe Width **C:** Capacity **D:** Center Hole **E:** Studs Qty **F:** Plate Type **G:** Cylinder Type **H:** Brake Type  
**FB** = Free Backing **STD** = Standard **PB** = Parking Brake **FSA** = Forward Self Adjusting

Item Number	Description	Extra Info	SO	Color	A	B	C	D	E	F	G	H
<b>K23-404-00</b>	Brake Assembly LH	Dexter		Painted	12.25in	4in	10K	4.50in	7	Cast	Duo	FSA
<b>K23-405-00</b>	Brake Assembly RH	Dexter		Painted	12.25in	4in	10K	4.50in	7	Cast	Duo	FSA

## Hydraulic Backing Plate 12-1/4" x 5"



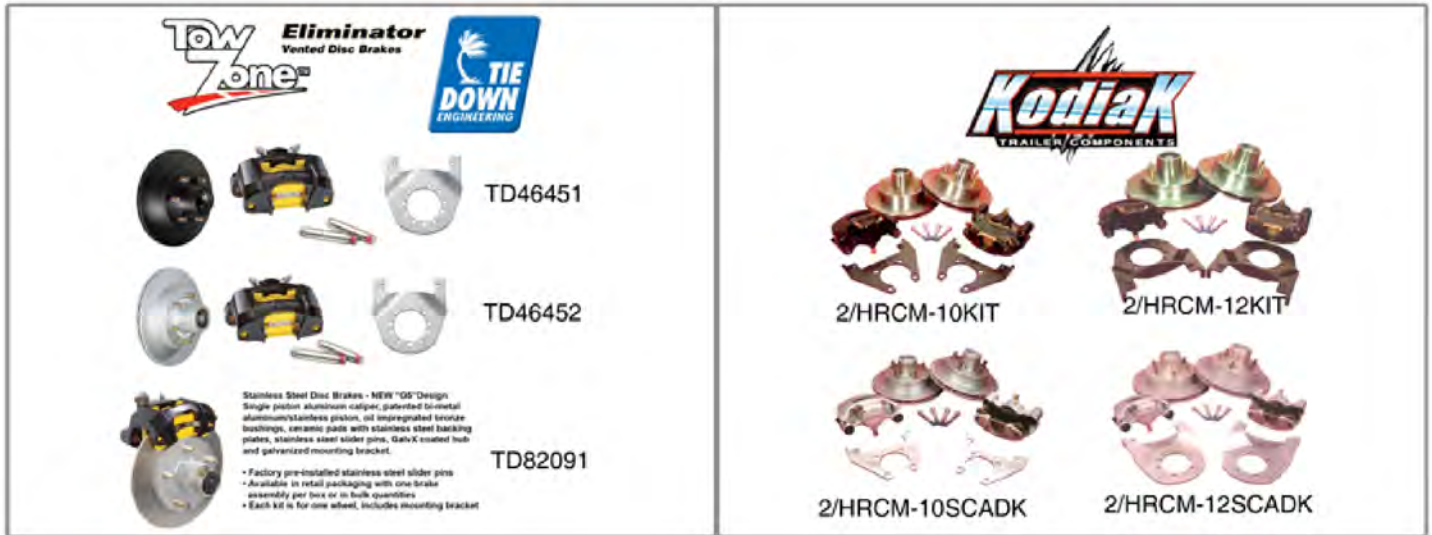
K23-408-00

**A:** Diameter **B:** Shoe Width **C:** Capacity **D:** Center Hole **E:** Studs Qty **F:** Plate Type **G:** Cylinder Type **H:** Brake Type  
**FB** = Free Backing **STD** = Standard **PB** = Parking Brake **FSA** = Forward Self Adjusting

Item Number	Description	Extra Info	SO	Color	A	B	C	D	E	F	G	H
<b>K23-408-00</b>	Brake Assembly LH	Dexter		Painted	12.25in	5in	12K	4.50in	7	Cast	Duo	FSA
<b>K23-409-00</b>	Brake Assembly RH	Dexter		Painted	12.25in	5in	12K	4.50in	7	Cast	Duo	FSA

# Axle Components

## Disc Brakes kits



**A: Axle Size    B: Bolt Pattern    C: Use Bearing Kit    D: Rotor Size    E: Axle Flange    F: Rotor Type**

Item Number	Description	Extra Info	SO	Color	A	B	C	D	E	F
2/HRCM-10KIT	Disc Brake Kit	Kodiak		Automotive Finish	3.5K	545	KIT3	10in	4	Integral
2/HRCM-10SCADK	Disc Brake Kit	Kodiak		Silver Cadmium	3.5K	545	KIT3	10in	4	Integral
2/HRCM-10SCADSS	Disc Brake Kit	Kodiak		Silver Cadmium	3.5K	545	KIT3	10in	4	Integral
2/HRCM-12KIT	Disc Brake Kit	Kodiak		Automotive Finish	6K	655	KIT6/KIT9	12in	5	Integral
2/HRCM-12SCADK	Disc Brake Kit	Kodiak		Silver Cadmium	6K	655	KIT6/KIT9	12in	5	Integral
2/HRCM-133-7-8E	Disc Brake Kit	Kodiak		E-Coating	7K	865	KIT10	13in	5	Integral
2/RCM10-SS-K	Disc Brake Kit	Kodiak		Stainless Steel	3.5K	545	KIT3	10in	4	No Hub
2/RCM-12-DAC	Disc Brake Kit	Kodiak		Dacromet	6K	655	----	12in	5	No Hub
2/RCM12-SS-K	Disc Brake Kit	Kodiak		Stainless Steel	6K	655	KIT6/KIT9	12in	5	No Hub
TD46261	Disc Brake Kit One Wheel	Tie Down		GalvX	3.75K	545	----	10in	4	No Hub
TD46451	Disc Brake Kit One Wheel	Tie Down		E-Coating	6K	655	Kit6	12in	5	Integral
TD46452	Disc Brake Kit One Wheel	Tie Down		GalvX	6K	655	Kit6	12in	5	Integral
TD46500	Disc Brake Kit One Wheel	Tie Down		E-Coating	3.75K	545	Kit3	9.6in	4	Integral
TD46501	Disc Brake Kit One Wheel	Tie Down		GalvX	3.75K	545	Kit3	9.6in	4	Integral
TD46513	Disc Brake Kit One Wheel	Tie Down		E-coating	3.75K	545	Kit3	8.15in	4	Integral
TD81117	Disc Brake Kit One Wheel	Tie Down		Stainless Steel	3.75K	545	Kit3	9.6in	4	Integral
TD81118	Disc Brake Kit One Wheel	Tie Down		Stainless Steel	6K	655	Kit6	12in	4	Integral
TD82091	Disc Brake Kit One Wheel	Tie Down		GalvX	3.75K	545	Kit3	10in	4	Integral
TD82092	Disc Brake Kit One Wheel	Tie Down		GalvX	6K	655	Kit6	12in	5	Integral

Axle Components

# Axle Components

## Calipers & Brackets

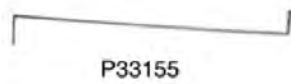
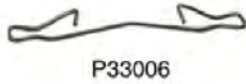


### A: Axle Size

Item Number	Description	Extra Info	SO	Color	A
<b>CMB-10-I</b>	Disc Bracket Integral 10in	Kodiak		Black	3.5K
<b>CMB-133-6&amp;7</b>	Universal Mount Bracket	Kodiak		Black	7k
<b>DBC-225-DAC</b>	Caliper Loaded Coated	Kodiak		DAC	3.5K
<b>DBC-225-E</b>	Caliper Disc Brake Pair	Kodiak		Black	3.5-6K
<b>DBC-225-SS</b>	Caliper Pair	Kodiak		Stainless	3.5-6K
<b>DBC-250 E</b>	Caliper Pair	Kodiak		Black	7-8K
<b>DBC-338-E</b>	Caliper	Kodiak	Yes	Black	10K
<b>DBC-MB</b>	Caliper Mount Bushing Pair	Kodiak		Black	All
<b>P35482</b>	Bracket Frame	UFP		Black	----
<b>P36020L</b>	Caliper DB42 Assembly LH	UFP		Zinc	----
<b>P36020R</b>	Caliper DB42 Assembly RH	UFP		Zinc	----
<b>P36045</b>	Bracket Mount Assembly	UFP		Black	----
<b>P36080</b>	Caliper DB42 Bracket	UFP		Black	----
<b>P37110</b>	Adapter Bracket Plated	UFP		Scad	5.2K
<b>P41050L</b>	Caliper DB35 9.75 Assembly LH	UFP		Black	3.5K
<b>P41050R</b>	Caliper DB35 9.75 Assembly RH	UFP		Black	3.5K
<b>P41056L</b>	Caliper DB35 9.75 Assembly LH	UFP		Stainless	3.5K
<b>P41056R</b>	Caliper DB35 9.75 Assembly RH	UFP		Stainless	3.5K
<b>P42015L</b>	Caliper DB35 Assembly LH	UFP		Aluminum	----
<b>P42015R</b>	Caliper DB35 Assembly RH	UFP		Aluminum	----
<b>TD44473X</b>	Caliper Bracket Mount	Tie Down		GalvX	6K-7K
<b>TD46304A</b>	Caliper Assembly	Tie Down		Aluminum	3.75K-6K
<b>TD46304S</b>	Caliper Assembly	Tie Down		Steel	3.75K-6K
<b>TD46901A</b>	Caliper Assembly	Tie Down		Aluminum	2.6K
<b>TD46910A</b>	Caliper Assembly	Tie Down		Aluminum	6K

# Axle Components

## Caliper Parts



Item Number	Description	Extra Info	SO
<b>DBC-225-BOOT</b>	Replacement Boot Caliper	Kodiak	
<b>DBC-225-SEAL</b>	Piston Seal 225	Kodiak	
<b>DBC-250-SEAL</b>	Piston Seal 250	Kodiak	
<b>DBC-MHBS</b>	Bolt Guide	Kodiak	
<b>DBC-MHBSB</b>	Bolt Caliper Guide	Kodiak	
<b>DBC-MHGB</b>	Bolt Guide	Kodiak	
<b>P33003</b>	Clip Spring Pad DB-35	UFP	
<b>P33006</b>	Retainer Wire Form DB-35	UFP	
<b>P33155</b>	Retainer Clamp DB-42 Kit	UFP	
<b>P34300</b>	Cover Plated Reservoir	UFP	
<b>P34508</b>	Tube Drain Reverse Valve 4.50	UFP	
<b>P36075</b>	Spring Clip Disc Pads DB-42 2 req.	UFP	
<b>TD12114</b>	Slider Pin	Tie Down	
<b>TD46304RB</b>	Caliper Rebuild Kit	Tie Down	

## Disc Brake Pads



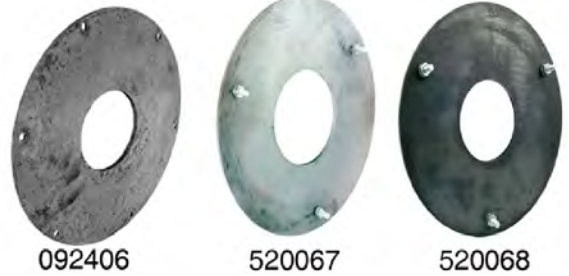
Item Number	Description	Extra Info	SO
<b>DBC-225-PADO</b>	Disc Brake Pad Ceramic 3.5K- 6K	Kodiak	
<b>DBC-250-PADO</b>	Disc Brake Pad Ceramic 7K-8K	Kodiak	
<b>DBC-338-CERM-PA</b>	Disc Pad Ceramic 10K	Kodiak	
<b>K71-629-00</b>	Disc Brake Axle Pad Set 6K-8K	Dexter	
<b>P33008</b>	Disc Brake Pad Inner/Outer DB-35	UFP	
<b>P33009</b>	Disc Brake Pad Outer DB-35	UFP	
<b>P33016</b>	Disc Brake Pad Set DB-42	UFP	
<b>TD11330</b>	Disc Brake Pads Orga/GalvX Outer	Tie Down	
<b>TD11331</b>	Disc Brake Pads Orga/GalvX Inner	Tie Down	
<b>TD11334</b>	Disc Brake Pads Ceramic/SS Outer	Tie Down	
<b>TD11335</b>	Disc Brake Pads Ceramic/SS Inner	Tie Down	
<b>TD11350</b>	Disc Brake Pads Ceramic/SS Outer	Tie Down	
<b>TD11351</b>	Disc Brake Pads Ceramic/SS Inner	Tie Down	
<b>TD82084</b>	Disc Pad Eliminator Vented	Tie Down	

# Axle Components

## Armature Plates

A: Plate Diameter B: Mfg.

Item Number	Description	SO	A	B
<b>092406</b>	Armature Plate w/o Bolt 9-16K		11-7/8in	Al-Ko
<b>520067</b>	Armature Plate 5-7K		12in	Hadco
<b>520068</b>	Armature Plate 3.5K	Yes	10in	Hadco
<b>K568261</b>	Armature Plate w/o Bolt 9-16K		11-7/8in	Al-Ko



## Brake Adjusters

A: Axle Brake Capacity B:MFG

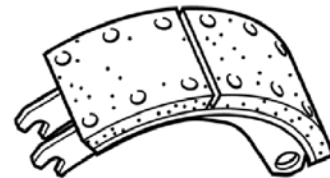
Item Number	Description	SO	A	B
<b>K568110</b>	Adjuster & Spring		3.5K-7K	Al-Ko
<b>K71-324-00</b>	Adjuster & Spring Electric		3.5K-7K	Dexter
<b>K71-472-00</b>	Adjuster		8-15K	Dexter
<b>K71-504-00</b>	Adjuster		8-15K	Dexter
<b>K71-505-00</b>	Adjuster		8-15K	Dexter
<b>K71-703-00</b>	Brake Adjuster Kit	---		Dexter
<b>LC136453</b>	Brake Adjuster Screw Kit		3.5K	Lippert
<b>SB05431</b>	Adjuster		3.5K	Demco
<b>SB42159</b>	Adjuster		5.2-7K	Demco



## Brake Air Shoes

A: Diameter B: Shoe Width C: Capacity D: Side E:MFG

Item Number	Description	SO	A	B	C	D	E
<b>040-322-02</b>	Air Shoe		12.25in	5in	12-15K	Left	Dexter
<b>040-322-03</b>	Air Shoe		12.25in	5in	12-15K	Right	Dexter



## Brake Flush Kits

Tie Down Flush kit accesses the internal components of trailer drum brakes for easy rinsing. Once installed, flushing salt, sand and road debris from the your trailer brakes is as easy as hooking up to a garden hose and turning the faucet. Regular flushing will greatly extend the life of trailer wheel assembly.

Item Number	Description	Extra Info
<b>TD81107</b>	Brake Line Flush Kit Trailer	Tie Down



# Axle Components

Axle Components

## Brake Electric Shoes

Per Wheel Set

A: Diameter B: Shoe Width C: Type D: Capacity E: Side



K71-046



K71-054-00



TK5003



K71-049

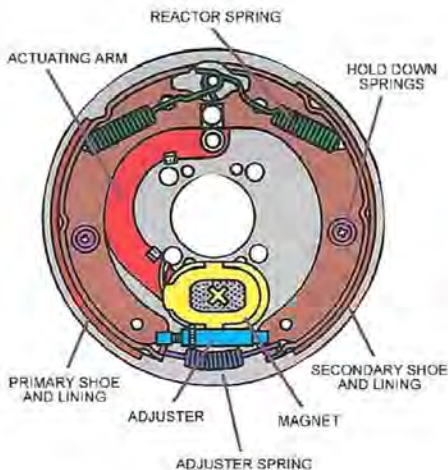


TK5000DX



TK6004

Item Number	Description	SO	A	B	C	D	E
K363924	Electric Shoes Kit		12in	3.375in	Stamped	8K	Left/Right
K568112	Electric Shoes Kit		10in	2.25in	Stamped	3.5K	Left/Right
K568126	Electric Shoes Kit		12in	2in	Stamped	5.2K-7K	Left/Right
K568173	Electric Shoes Kit	Yes	12in	2in	Park Brake	5.2K-7K	Left/Right
K568251	Electric Shoes Kit		12.25in	3.5in	Stamped	10K-12K	Left/Right
K71-046	Electric Shoes Kit		10in	1.5in	Stamped	3K	Left/Right
K71-047-00	Electric Shoes Kit		10in	2.25in	Stamped	3.5K	Left/Right
K71-048-00	Electric Shoes Kit		12in	2in	Stamped	5.2K-6K	Left/Right
K71-049	Electric Shoes Kit		12.25in	3.375in	Stamped	9K-10KGD	Left
K71-050	Electric Shoes Kit		12.25in	3.375in	Stamped	9K-10KGD	Right
K71-051-00	Electric Shoes Kit		12.25in	4in	Stamped	10KHD	Left
K71-052-00	Electric Shoes Kit		12.25in	4in	Stamped	10KHD	Right
K71-053-00	Electric Shoes Kit		12.25in	5in	Stamped	12K-15K	Left
K71-054-00	Electric Shoes Kit		12.25in	5in	Stamped	12K-15K	Right
K71-127-00	Electric Shoes Kit		12in	2in	Non Asbestos	7K	Left/Right
K71-410-00	Electric Shoes Kit		12.25in	2.5in	Old Style	7.2K	Left/Right
K71-496-00	Electric Shoes Kit		12.25in	2.25in	New Style	7.2K	Right
K71-497-00	Electric Shoes Kit		12.25in	2.5in	New Style	7.2K	Left
K71-498-00	Electric Shoes Kit		12.25in	3.375in	Cast	9K-10KGD	Right
K71-499-00	Electric Shoes Kit		12.25in	3.375in	Cast	9K-10KGD	Left
K71-500-00	Electric Shoes Kit		12.25in	4in	Cast	10KHD	Right
K71-501-00	Electric Shoes Kit		12.25in	4in	Cast	10KHD	Left
K71-502-00	Electric Shoes Kit		12.25in	5in	Cast	12K-15K	Right
K71-503-00	Electric Shoes Kit		12.25in	5in	Cast	12K-15K	Left
LC136444	Electric Shoes Kit		12in	2in	Stamped	5.2K-7K	Left/Right
LC136451	Electric Shoes Kit		10in	2.25in	Stamped	3.5K	Left/Right



Determine if the backing plate assembly is for the right or left side. Position the assembly so that the brake magnet is at the bottom. Now look at the actuating arm (seen in picture to the left). If the arm is curved to the right, it is for the right side. If the actuating arm curves to the left, it is for the left side.

Determine the size of the brake.  
First measure the diameter of the mounted brake shoes.  
Next measure the width of the brake shoe

# Axle Components

## Brake Hydraulic Shoes

**A:** Diameter **B:** Shoe Width **C:** Axle Capacity **D:** Side

Item Number	Description	Extra Info	SO	A	B	C	D
18497	Hydraulic Shoe Free	Dico		12in	2in	6K	----
19861	Hydraulic Shoe w/Kit	Atwood		7in	1.75in	2K	----
4437200	Hydraulic Shoe 1 Rear	Titan	Yes	10in	2.25in	3.5K	----
4445900	Hydraulic Shoe 1 Front	Titan		10in	2.25in	3.5K	----
K363925	Hydraulic Shoe w/Kit-per Wheel	Al-Ko		12in	3.375in	8K	----
K568234	Hydraulic Shoe w/Kit	Al-Ko		12.25in	3.5in	10-12K	----
K71-165-00	Hydraulic Shoe Kit	Dexter		12.25in	3.375in	8-10KGD	Left
K71-166-00	Hydraulic Shoe Kit	Dexter		12.25	3.375	8-10KGD	Right
K71-167-00	Hydraulic Shoe Kit	Dexter		12.25in	4in	10KHD	Left
K71-168-00	Hydraulic Shoe Kit	Dexter		12.25in	4in	10KHD	Right
K71-169-00	Hydraulic Shoe Kit	Dexter		12.25in	5in	12-15K	Left
K71-170-00	Hydraulic Shoe Kit	Dexter		12.25in	5in	12-15K	Right
K71-267-00	Hydraulic Shoe Kit	Dexter		10in	2.25in	3.5K	----
K71-268-00	Hydraulic Shoe Kit	Dexter	Yes	12in	2in	5.2K-6K	----
K71-269-00	Hydraulic Shoe Kit	Dexter		12in	2in	7K	Left
K71-270-00	Hydraulic Shoe Kit	Dexter		12in	2in	7K	Right
K71-393-00	Hydraulic Shoe Kit Free Back	Dexter	Yes	10in	2.25in	3.5K	----
K71-394-00	Hydraulic Shoe Kit Free Back	Dexter		12in	2in	5.2K-7K	Left
K71-395-00	Hydraulic Shoe Kit Free Back	Dexter		12in	2in	5.2K-7K	Right
K71-427-00	Hydraulic Shoe & Lining Kit	Dexter	Yes	12in	2in	5.2K-7K	Left
K71-428-00	Hydraulic Shoe & Lining Kit	Dexter	Yes	12in	2in	5.2K-7K	Right
P32453	Brake Shoe & Lining Prim/Secondary	UFP		----	----	----	----
SB07811	Hyd Shoe Kit Uni Servo Marine	Demco		10in	2.25in	3.5K	----
SB07812	Hyd Shoe Kit Free Back Marine	Demco		10in	2.25in	3.5K	----
SB07813	Uni or Duo Servo Shoe Kit Marine	Demco		12in	2in	5.2K-6K	----
SB07814	Hyd Shoe Kit Free Back Marine	Demco		12in	2in	5.2K-6K	----



18497



K363925



SB07811



K71-267-00



4437200



**Free-Backing**  
Small Shoe to Front  
(Right Side Shown)



**Uni-Servo**  
Push Rod To Front  
(Left Side Shown)



**Duo-Servo**  
Larger Shoe Lining to Rear  
(Left Shown)

**Note:**  
Brake Line Exits Behind Axle Tube.

Axle Components

# Axle Components

## Brake Dust Shield & Miscellaneous



036-115-20



1531045

A: Mfg.

Item Number	Description	SO	A
036-115-20	Dust Shield 8K Elct/Hyd Backing Plates		Dexter
1531045	Dust Shield Top 12K		AI-Ko

## Brake Lever Arms

A: Shoe Dia. B: Shoe Width C: Side D: Mfg.



Item Number	Description	SO	A	B	C	D
047-107-05	Lever Arm		12in	2in	Left	Dexter
047-108-05	Lever Arm		12in	2in	Right	Dexter
047-123-38	Actuator Arm Assy w/Pin	Yes	----	----	Left	Dexter
047-124-05	Actuator Arm Assy		12.5in	2.5in	Left	Dexter
568253	Lever Auto ADJ 8-16K		----	----	Right	AI-Ko
568254	Lever Auto ADJ 8-16K		----	----	Left	AI-Ko
60283100	Lever Arm		12in	2in	Left	AI-Ko
60283200	Lever Arm		12in	2in	Right	AI-Ko
603135	Lever Arm 8-12K		12in	3.375in	Right	AI-Ko
603136	Lever Arm 8-12K		12in	3.375in	Left	AI-Ko

## Brake Hold Down



96508



9661106  
SB10959  
SB18505



SB05983  
SB07883  
SB07884  
SB9790



SB9789

A: Mfg.

Item Number	Description	SO	A
96508	Hold Down Cup w/Spring		AI-Ko
9661106	Hold Down Pin		AI-Ko
SB05983	Hold Down Spring		Demco
SB07883	Hold Down Spring Free Back		Demco
SB07884	Hold Down Spring Universal		Demco
SB10959	Hold Down Pin		Demco
SB18505	Hold Down Pin Hydraulic Brake		Demco
SB9789	Hold Down Pin Hydraulic Brake		Demco
SB9790	Hold Down Spring Free Back		Demco



# Axle Components

## Brake Wheel Cylinders



**A:** Backing Plate Size **B:** Mfg.

Item Number	Description	SO	Color	A	B
05431	Screw Bleeder	Yes	Zinc	10-12in	Demco
0977600	Wheel Cylinder Uni Right		Zinc	10-12in	Titan
0977700	Wheel Cylinder Uni Left		Zinc	10-12in	Titan
21669	Wheel Cylinder Pair		Marine	10-12in	Atwood
84210	Wheel Cylinder Pair		Plain	7in	Atwood
K71-081-00	Master Cylinder 1-1/4in Rebuild Kit 9-12K		Plain	12-1/4x3-3/8-4-5in	Dexter
SB15845	Wheel Cylinder Rebuild Kit w/Spring/Cup/Boot 1-1/8 bore		Plain	10-12in	Demco
SB17185	Wheel Cylinder Duo Servo RH		Plain	10-12in	Demco
SB17186	Wheel Cylinder Duo Servo LH		Plain	10-12in	Demco
SB9776M	Wheel Cylinder Single Servo RH		Marine	10-12in	Demco
SB9777M	Wheel Cylinder Single Servo LH		Marine	10-12in	Demco
SB9783	Cylinder Push Rod Slave		Plain	10-12in	Demco
TTWCLH	Wheel Cylinder LH		Marine	10-12in	Tuff-Tow
TTWCRH	Wheel Cylinder RH		Marine	10-12in	Tuff-Tow

## Solenoid Valves & Parking Brake



**A:** Mfg.

Item Number	Description	SO	A
23852	Hydraulic Parking Brake Cable		Titan
5404X	Electric Solenoid Free-Backing Kit		Demco
80376	Solenoid w/Fit		Atwood
BA-KSV-NO	Solenoid Normally Open		Kodiak
BAV050SA	Solenoid Valve 4-Way 2 Position		Buyers
P33536	Solenoid w/Bullet		UFP
P34500	Solenoid w/o Bullet		UFP
P34557	Lockout Cap Actuator Brake		UFP

Axle Components

# Axle Components

## Brake Lines Kits



5424



5425



5429



80881



80891



S-100SA



80885



TD80326



TD80328



S-200TA

A: Length B: Fitting Diameter C: MFG

Item Number	Description	SO	A	B	C
5424	Brake Line Single Kit Torsion		193x83in	3/16in	Demco
5425	Brake Line Tandem Kit Torsion		193x83in	3/16in	Demco
5429	Brake Line Tandem Kit		193x94in	3/16in	Demco
80881	Brake Line Single Kit		193x94in	3/16in	Demco
80885	Brake Line Single Kit		20ft	3/16in	Atwood
80891	Brake Line Tandem Kit		193x89in	3/16in	Atwood
S-100SA	Brake Line Single Kit		Main Line	3/16in	Tuff-Tow
S-200TA	Brake Line Tandem Kit		Main Line	3/16in	Tuff-Tow
TD80326	Brake Line Kit Single Axle		240in	3/16in FinvF	Tie Down
TD80328	Brake Line Kit Tandem Axle		240in	3/16in FinvF	Tie Down

# Axle Components

## Brake Lines Kits Brake Line Parts



FinvF= Female Inverted Flare    MinvF= Male Inverted Flare    FPT= Female Pipe Thread    MPT= Male Pipe Thread  
A: Length    B: Fitting Diameter    C: MFG

Item Number	Description	SO	A	B	C
05981	Brake Line Hose L Bracket		N/A	N/A	Demco
05982	Brake Line Hose		18in	3/16in	Demco
12098	Orifice Connector Surge Brake		N/A	3/16x1/8in MPT	Titan
12099	Orifice Connector Surge Brake		N/A	3/16x1/4in MPT	Titan
80910	Brake Line Add Torsion Single		---	3/16in	Atwood
B40002	Brake Line Quick Disconnect		N/A	1/4in FPT	Buyers
SB09571	Brake Hose		24.5in	3/16in	Demco
SB18H137	Brake Hose Male to Male		18in	3/16in	Demco
SB5193	Brake Line		193in	3/16in	Demco
SB5240	Brake Line		240in	3/16in	Demco
SB7764	Brake Line Retainer Clip		N/A	N/A	Demco
SB7778	Retainer Snap Ring Free Back		N/A	N/A	Demco
SB7785	Brake Line Tee w/Mt Bracket		N/A	3/16in FinvF	Demco
SBD10	Brake Line Union		N/A	3/16in FinvF	Demco
SBQDK	Brake Line Quick Disconnect Kit		N/A	3/16in FinvF	Tuff-Tow
TD80327	Brake Line Kit Add On		76in	3/16in FinvF	Tie Down
WH7732	Brass Fitting Tube		N/A	7/16-20x1/4 F	Tuff-Tow

# Axle Components

## Brake Magnets



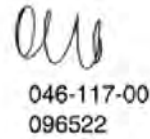
**A: Length B: Width C: Thickness D: Style E, F & G: Fits**

Item Number	Description	Extra Info	Color	A	B	C	D	E	F	G
<b>K568111</b>	Magnet Kit	Hayes (After Late 1987)	W Wire	3.125in	2in	.9375	Oval	Hayes 12x2	N/A	N/A
<b>K568119</b>	Magnet Kit	Hayes (After Mid 1987)	G Wire	3.125in	2in	.9375in	Oval	Hayes 10x2.25	N/A	Hayes 10x1.625
<b>K568252</b>	Magnet Kit	N/A	R Wire	4.245in	2.7in	1.125in	Hex	Hayes-Alko	8-16K	N/A
<b>K71-057-00</b>	Magnet Kit	7x1.25 (After 4-1-90) 10x1.5 (Prior 9-88)	W Wire	1.925in	1.855in	1.125in	Round	Dexter 7x1.25	Dexter 10x1.5	N/A
<b>K71-104-00</b>	Magnet Kit	Hayes (After Mid 1987)	G Wire	3.125in	2in	.9375in	Oval	Dexter 10x2.25	Hayes 10x2.25	N/A
<b>K71-105-00</b>	Magnet Kit	Hayes (After Late 1987)	W Wire	3.125in	2in	.9375in	Oval	Dexter 12x2	Hayes 12x2	N/A
<b>K71-125-00</b>	Magnet Kit	7K	Blk Wire	3.125in	2in	.9375in	Oval	Dexter 12x2	Hayes 12x2	N/A
<b>K71-375-00</b>	Magnet Kit	(After 6/92)	W Wire	4in	2.5in	1in	Oval	Dexter 12.25x3.375	8K	N/A
<b>K71-376-00</b>	Magnet Kit	(After 6/92)	Y Wire	4in	2.5in	1in	Oval	Dexter 12x3.375	Dexter 12.25x4	9-10K
<b>K71-377-00</b>	Magnet Kit	After (6/92) Use W/047-123-16	Blk Wire	4in	2.5in	1in	Oval	Dexter 12.25x5	12K	N/A
<b>K71-378-00</b>	Magnet Kit	(Prior to April 2000)	BL Wire	4in	2.5in	1in	Oval	Dexter 12.25x5	15K	N/A
<b>K71-441-00</b>	Magnet Kit	N/A	R Wire	4in	2.5in	1in	Oval	Dexter 12.25x2.5	7.2K	N/A
<b>LC136447</b>	Magnet Kit	N/A	Black	3.125in	2in	.9375	Oval	Lippert	12x2	N/A
<b>LC136454</b>	Magnet Kit	N/A	Green	3.125in	2in	.9375	Oval	Lippert	10x2.25	N/A
<b>TTMK10</b>	Magnet Kit	N/A	Green	3.125in	2in	.9375	Oval	Multiple Brands	10x2.25	N/A
<b>TTMK12</b>	Magnet Kit	N/A	Black	3.125in	2in	.9375	Oval	Multiple Brands	12x2	N/A

Axle Components

# Axle Components

## Brake Magnets Parts



A: Capacity B: Size C: Mfg.

Item Number	Description	SO	A	B	C
027-039-00	Wire Clip		----	12.25in	Dexter
027-050-00	Magnet Retainer Clip		7.2-8K	----	Dexter
046-016-00	Wire Grommet		----	----	Dexter
046-117-00	Magnet Spring		7.2-15K	----	Dexter
046-121-00	Magnet Retainer Clip		----	7in	Dexter
096522	Magnet Spring	Yes	----	10in/12in	Al-Ko/Hayes
9680815	Magnet Clip		3.5K-7K	10in/12in	Al-Ko/Hayes
K71-399-00	Electric Brake Parts Kit		Multiple	----	Dexter

# Axle Components

## Brake Springs



See Replacement Parts Breakdown Section.

A: Backing Plate Size B: Shoe Width C: Mfg D: Model

Item Number	Description	SO	A	B	C	D
046-018-00	Adjuster Screw Spring		10in	2.25in	Dexter	---
046-136-00	Center Spring		12.25in.	---	Dexter	Elect
069-093-00	Retaining Ring		---	---	Dexter	---
069-096-00	Snap Ring		---	---	Dexter	---
096523	Spring Self Adjusting		8-16K	---	Hayes	---
10957	Adjusting Screw Spring	Yes	10in	2.25in	Titan	KarTote
10958	Spring Shoe		10in	2.25	Titan	KarTote
568226	Retract Spring 8-16k		---	---	Al-Ko	Elec/Hyd
6814	Spring Shoe		10in	2.25in	Titan	KarTote
96526	Adjuster Screw Spring 3.5K-7K		12in	2in	Hayes	Elect
9785	Spring for Lever Arm		10in	2.25in	Titan	KarTote
9786	Spring Shoe		12in	2in	Titan	Hyd
K568096	Spring Kit w/Hold Downs		12in	2in	Al-Ko	Elect
K568097	Spring Kit w/Hold Downs		10in	2.25in	Al-Ko	Elect
K71-362-00	Spring Kit		10in	1.5in	Dexter	Elect
K71-363-00	Spring Kit		10/12in	---	Dexter	Elect
K71-412-00	Spring Kit		12.25in	2.5in	Dexter	Elect
K71-417-00	Adjuster Spring Kit		8-15K	---	Dexter	Elect
K71-418-00	Adjuster Spring Kit		8-15K	---	Dexter	Elect
K71-421-00	Spring Kit		8-15K	---	Dexter	Elect
K71-422-00	Spring Kit		8-15K	---	Dexter	Hyd
K71-426-00	Spring Kit		10in	2.25in	Dexter	Hyd
K71-434-00	Spring Kit		12in	2in	Dexter	Hyd
K71-506-00	Spring Kit		8-15K	---	Dexter	Elect
SB10957	Adjuster Spring		10in	2.25in	Demco	Elect
SB24765	Adjuster Spring		12in	2in	Demco	Hyd